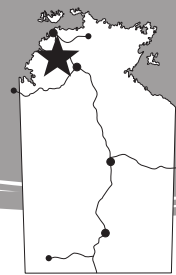


Butterfly Gorge Nature Park



Fact Sheet

Butterfly Gorge is tucked away at the base of a low sandstone plateau. The sheer rock faces, edged by dense riverine vegetation and rocky spinifex country, offer shaded riverine walks and beautiful scenery.

The *Wagiman* people speak for this place. Their ancestors are one with the land.

Make your way along the river to the entrance of the Gorge. Quite often you may be the only visitors and will be able to experience the true tranquility and isolation of this beautiful spot.

The Park protects a part of the Douglas River which eventually flows into the Daly River about 50 km downstream.

Past logging industries removed many of the huge *Melaleucas*. The timber was used to build the Stokes Hill Wharf in Darwin.

Access (see map)

The Park which is close to Tjuwaliyn (Douglas) Hot Springs Park is approximately 130 km from Katherine and 200 km from Darwin along the old Stuart Highway scenic route. The final 17 km into the Park is a 4WD track. Caravans cannot be taken into this Park.

Consult maps and check road conditions prior to your visit on 1 800 246 199 or visit www.roadreport.nt.gov.au

When to Visit

It is only possible to visit the Park during the dry season (May - September). Heavy rains close the park each year.

What to See and Do



Swimming - a swim across the main pool and through the narrowest of gorges will get you to the upper pools. A little climbing and swimming leads to the most beautiful and peaceful gorge.



Walking - the Gorge and main swimming area can be accessed via two routes starting at the carpark.

River Walk

Distance: 2 km return

Time: 20 mins

Grade: 2 - easy.

Takes you to a rocky outcrop in the Gorge. Here you may see hundreds of butterflies resting in the shade of the trees. The more adventurous can swim around the rocks to the main pool.

Lookout Walk

Distance: 5 km return

Time: 1.5 hours

Grade: 4 - moderate to difficult.

Takes you through the forest and up a steep rocky escarpment offering views of the Gorge. From here the walk leads you down to the main pool.



No Camping

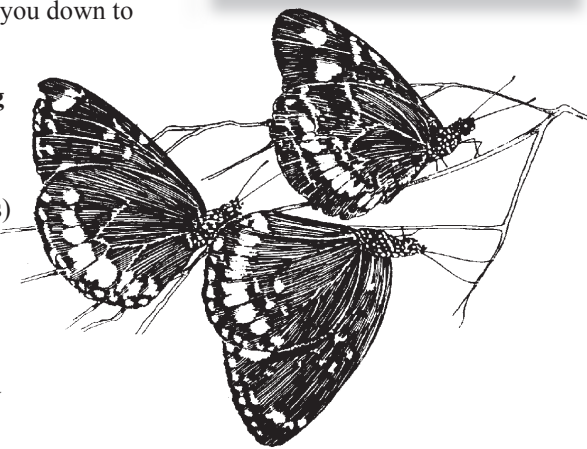
- camping is provided nearby at Tjuwaliyn (Douglas) Hot Springs Park or at the Douglas River Esplanade Conservation Area. Camping fees apply - please pay fees at the honesty box before setting up camp.

Safety and Comfort

- Observe park safety signs.
- Swim only where recommended, observe warning signs.
- Carry and drink plenty of water.
- Wear a shady hat, sunscreen and insect repellent.
- Wear suitable clothing and footwear.
- Carry a first aid kit.
- Avoid strenuous activity during the heat of the day.
- Ensure your vehicle is well maintained and equipped.

Please Remember

- No bins are provided, please take your rubbish away with you.
- Keep to designated roads and tracks.
- All cultural items and wildlife are protected.
- Pets are not permitted in this Park.
- Nets, traps and firearms are not permitted.
- Camping is not permitted.
- Check that your vehicle is not transporting pests like weeds and Cane Toads.



The Park's name comes from the large number of **Common Crow Butterflies** *Euploea core corinna* which shelter in the vegetation.

Parks & Wildlife Commission of the Northern Territory

Batchelor Office
Ph: (08) 8976 0282

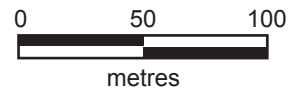
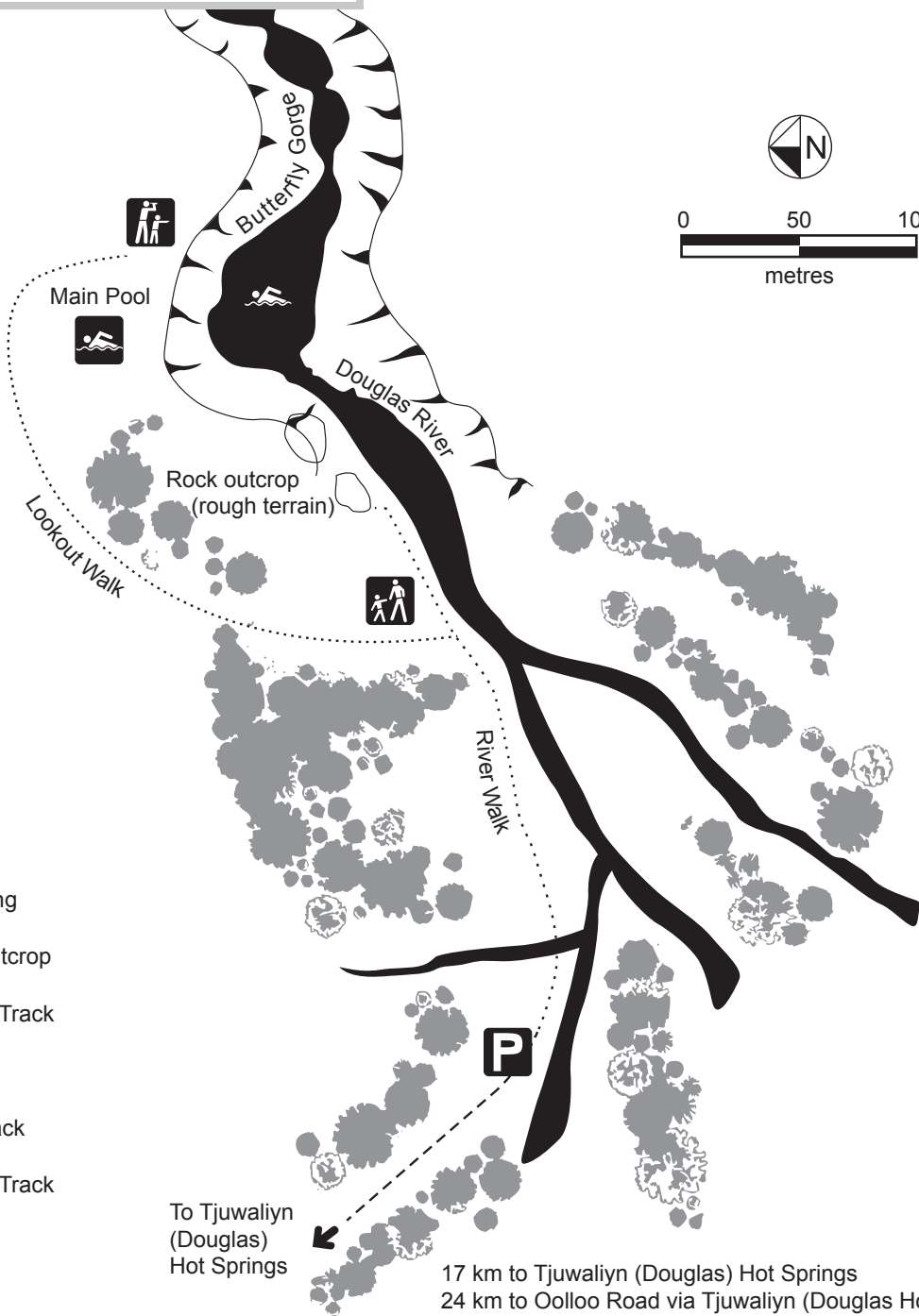
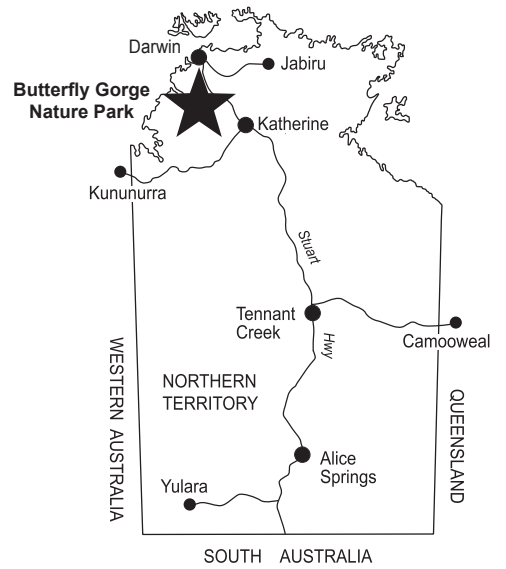
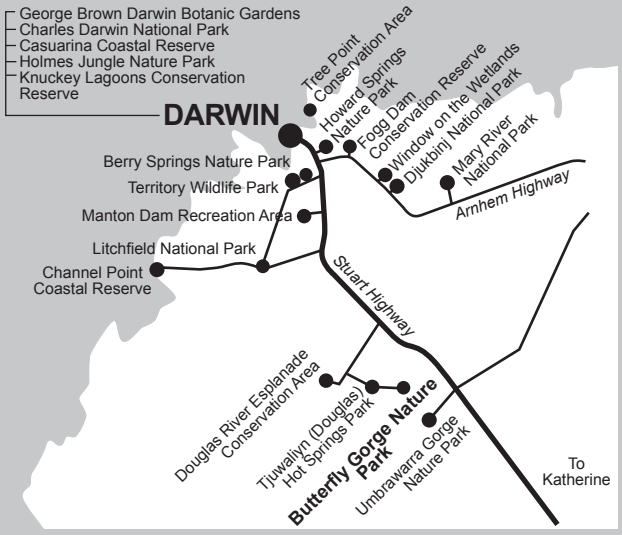
www.parksandwildlife.nt.gov.au

Head Office - Darwin, Level 1, JHV2
Jape Homemaker Village,
356 Bagot Road, Millner, NT, 0810
GPO Box 1448 DARWIN NT 0801

Ph: (08) 8999 4555



Butterfly Gorge Nature Park



LEGEND

- Parking
- Swimming
- Rock Outcrop
- Walking Track
- Lookout

- 4WD Track
- Walking Track