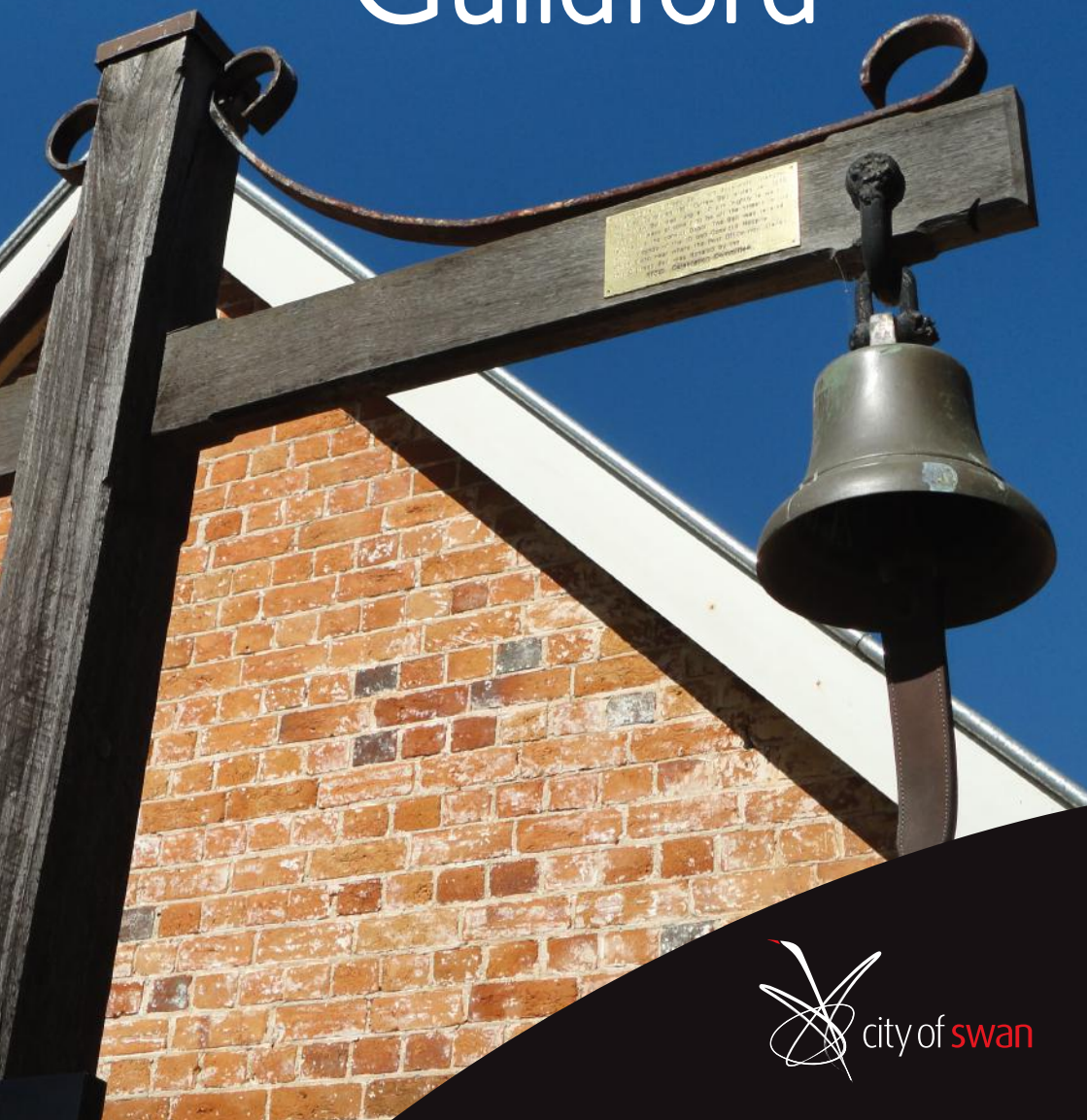


Glorious HISTORIC Guildford





Glorious

Welcome to Historic Guildford

With its heritage buildings, early settlement and convict history, antique stores, character pubs and village charm, Guildford emits the feel of a bygone era.

The picturesque village of Guildford was established during the founding of the Swan River Colony in 1829 and today is one of only three towns in Perth on the National Trust register. Guildford has also been officially added to the State Register of Heritage Places. Established on what is virtually an island encircled by the Swan and Helena Rivers, Guildford is ideally suited to explore on foot.

Much of Guildford's original town plan, including the central church square (now known as Stirling Square), subdivisions and general land use remain largely intact. A visit provides a rare glimpse into early colonial settlement

Guildford Today

Guildford is home to Perth's largest collection of antique and homewares shops, where visitors can spend hours rummaging around.

Heritage-style pubs provide the perfect place to enjoy a cold brew or a local wine with friends. Visitors are also spoilt for choice when it comes to food with everything from a 'kitchen sink' style burger from the iconic Alfred's Kitchen, to pizza, pasta, tapas, noodles and rice. As is popular in all small towns, there are also quaint tea-houses and a signature bakery. Coffee lovers haven't been forgotten either, with specialty coffee easy to find.

Meadow Street Heritage Precinct

The Colonial Gaol is an important example of early architecture largely constructed by convict labour. Built in four stages from 1841 to 1867, it was used as a police station until 1969. The story of law and order in Guildford and the Swan District together with a rogue's gallery of some of the gaol's inmates are told here. Visitors will have a chance to walk inside a gaol cell, complete with toilet bucket in the corner!

A visit to Taylor's Cottage is a delight. This perfectly preserved building invites exploration and an understanding of what it must have been like to live in the late 19th century. Occupied by the Taylor family in the 1880s, it is reported that 13 children grew up there, with many of them sleeping on the verandahs.

Take the chance to peek into a rare weatherboard wash house and wood shed dating from 1913. This was a feature of most houses from the 1900s to the 1950s. View the washing copper and mangles and see what was involved in doing the weekly wash 100 years ago.

The Swan Guildford Historical Society opens these attractions Tuesday to Saturday from 10am-2pm. Adult entry is \$5 and children are \$3 - under fives are free.

Guildford Heritage Walk Trails

Each trail starts and finishes at the Old Guildford Courthouse (home of the Swan Valley Visitor Centre); with coloured maps to assist you along the way, indicating how to follow the coloured markers and where to find the information plaques.

The Captain Stirling Walk is one of the longer walks and features WA's oldest continually operating pub (Rose & Crown c.1841) and the town's general store (Padbury's Store c.1869) plus the magnificent mature plane trees of Guildford Grammar School.

The Town Walk provides some insight into early colonial life. Visitors will see examples of many civic and government buildings, including the courthouse building and gaol, the second stage of which was built with the help of convict labour in 1851 as Guildford established itself as a major port and market town.

The River Ramble takes people down to the banks of the iconic Swan River highlighting its important role in Guildford. Along the way visitors will pass some of the earliest retail and wholesale businesses, operated by Western Australia's most successful entrepreneurs of the time.

The Stirling Square Circuit is best suited to those with less time and incorporates the best of the Meadow Street precinct and picturesque Stirling Square. Typical of English town planning, Stirling Square was the Guildford town centre where people would gather to worship, play sport and socialise. The tree-lined parkland was also a traditional Aboriginal meeting place. Historically, Guildford was known by local Aboriginal people as Mandoon, place of many trees.



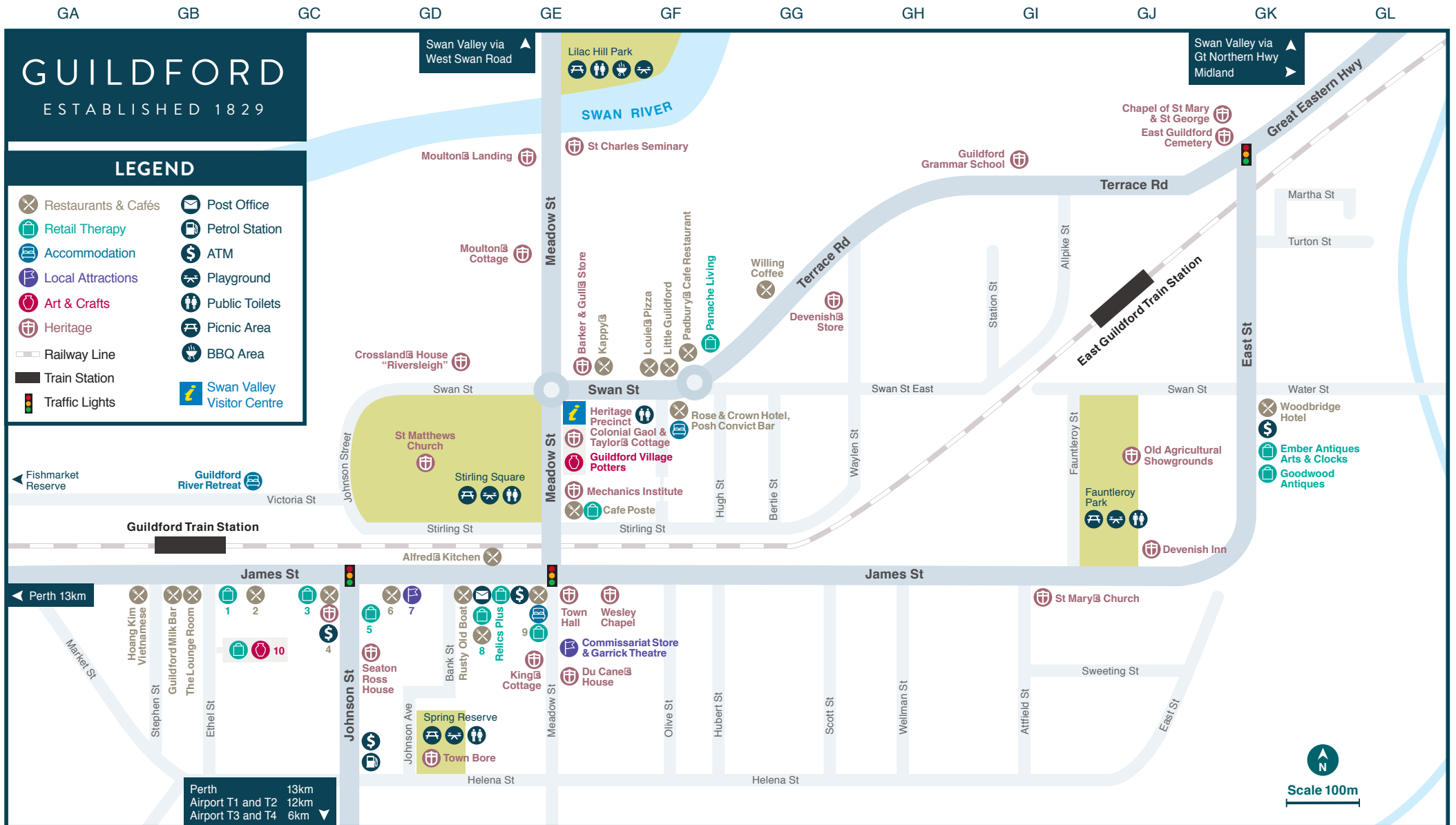
Guildford ANZACs Trail Map

The Guildford ANZACs Trail Map gives people the opportunity to walk an historic town and experience the impact of World War I on each street. An ANZAC home or place of residence in Guildford or South Guildford was the place where a World War 1 soldier or nurse resided before leaving for war (1914-18); surviving homes of ANZACs have been identified and marked with a brass poppy plaque.

These locations may include a childhood home, where they boarded for school, a nominated address of a family member from their attestation papers, or a recorded home of their wife or widow up to the end of the war in November 1918.

This is a self-guided experience and visitors will need to download information from the website at guildfordanzacs.org.au.

Details on the ANZACs that lived in each of these homes can be found on the interactive trail map.



Please note: Every effort has been made to ensure details represented in this publication are correct at the time of printing. Updated August 2021.
 Not all heritage sites are open to the public.

GUILDFORD MAP BUSINESS LISTING	
1. Georges Furniture Restoration, Bonnie's World	6. King & I Thai Restaurant
2. Guildford Town Bakery, Little A's Cafe, Choc Chillii Pork Co	7. Museum of Natural History
3. Basic Elements, Curio Warehouse, Imagine That, Jones of Guildford	8. The Dutch Shop, Mimmo's
4. Guildford Hotel, Locale Mio	9. The Stirling Arms Hotel, Relics Plus
5. Gift Inn	10. The Artists Nook, Dr Russell's Imaginarium, Orinoco & Bungo, Guildford Jarrah

The Captain Stirling Walk

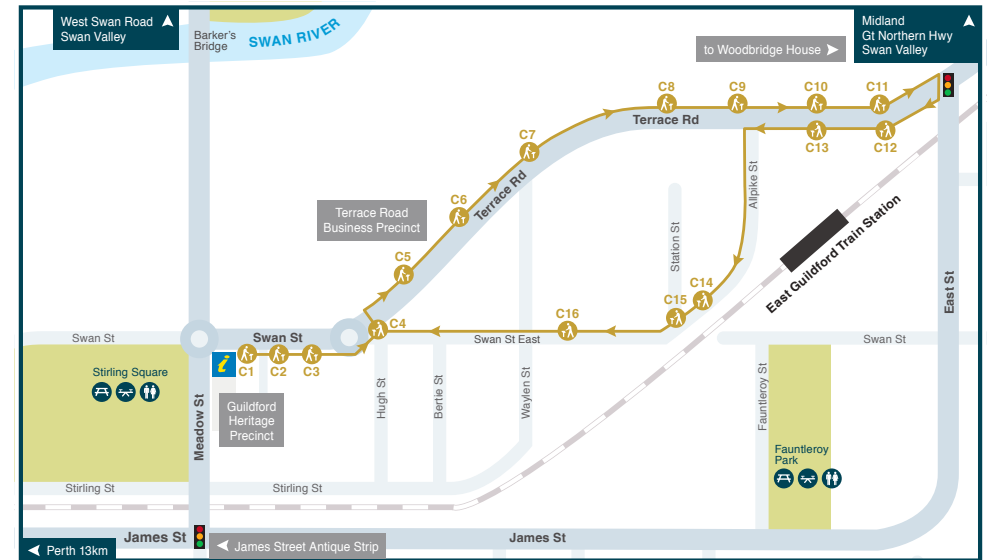
A longer walk, featuring the gorgeous old buildings and much-loved mature plane trees of Guildford Grammar School.

This trail meanders past the grounds of the former Bell Bros business, the beautifully restored Rose and Crown Hotel (c.1841), Western Australia's oldest continually operating pub, and Padbury's Store (c.1869). It passes a number of historic cottages, locations and streetscapes and provides an expansive view out over what was Captain James Stirling's beloved Woodbridge Estate on the Swan River floodplain.

A feature of the trail is the picturesque grounds and London Plane Tree streetscape of Guildford Grammar School, founded by Charles Harper in 1896. This prestigious co-ed school provides an Australian interpretation of the traditional English public school education system and many of its students have become prominent State and Australian citizens.

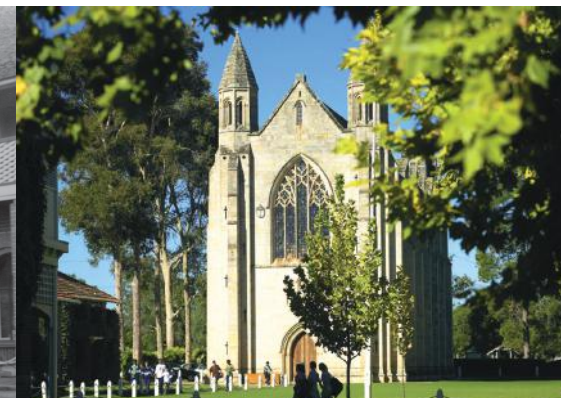
Located within the school grounds* is the imposing Chapel of St Mary and St George, consecrated in 1914 and today one of the finest examples of Gothic architecture in Australia.

*Visitors to the Chapel must report to the Guildford Grammar administration building.



Not all heritage sites are open to the public.

- | | |
|--------------------------------|---|
| C1. Guildford Courthouse | C9. Guildford Grammar School |
| C2. Bell Bros, The Yard | C10. Chapel of St Mary and St George |
| C3. Rose and Crown Hotel | C11. Old Guildford Cemetery |
| C4. Padbury's Store | C12. The former Station Master's Cottages |
| C5. The Farm Manager's Cottage | C13. Flemish Bond Cottages |
| C6. 93 Terrace Road | C14. The Old Agricultural Showgrounds |
| C7. The Guildford 'Toc H' | C15. The Worker's Cottages |
| C8. Woodbridge | C16. The Independent Chapel |



The Town Walk

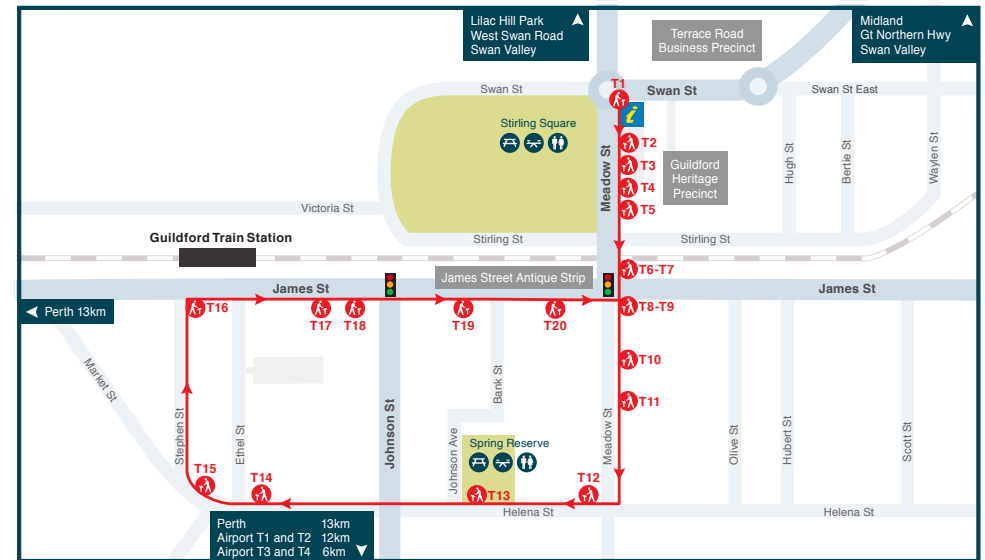
This trail passes through the historic Meadow Street precinct and returns via the Guildford town centre.

The Town Walk commences at the Guildford Heritage Precinct, one of the sites where, in 1829, Surveyor H.C. Sutherland set aside substantial land facing Stirling Square for civic and government buildings.

In 1841, the first government building was constructed within the precinct consisting of two prison cells and a constable's room. In 1851, police married quarters, a living room, a justice room and seven cells were added. A bigger magistrate's room was built on in 1853. More changes took place with new cells and a prisoners' day room added in 1867 and a big exercise yard in 1868.

The trail then heads south across the railway line to Helena Street, passing numerous historic buildings along the way including the art-deco style Guildford Town Hall (c.1937).

It then traces a roughly circular route past Western Australia's oldest continually operating primary school returning via the shopping precinct on James Street, where you can pause for a coffee or to browse the antique shops.



Not all heritage sites are open to the public.

- T1. Guildford Courthouse
- T2. Colonial Gaol
- T3. Taylor's Cottage
- T4. Mechanics Institute
- T5. Former Guildford Post Office
- T6. Wesley Chapel and Manse
- T7. Guildford Convict Depot
- T8. Local Government Comes to Guildford
- T9. Stirling Arms
- T10. Commissariat Store
- T11. The House the Lieutenant Built
- T12. Kings Meadow
- T13. Town Bore
- T14. Guildford Primary School
- T15. The Two Rivers
- T16. The Railway
- T17. Vaudeville Theatre
- T18. Guildford Hotel
- T19. Brockman's House
- T20. Alfred's Kitchen



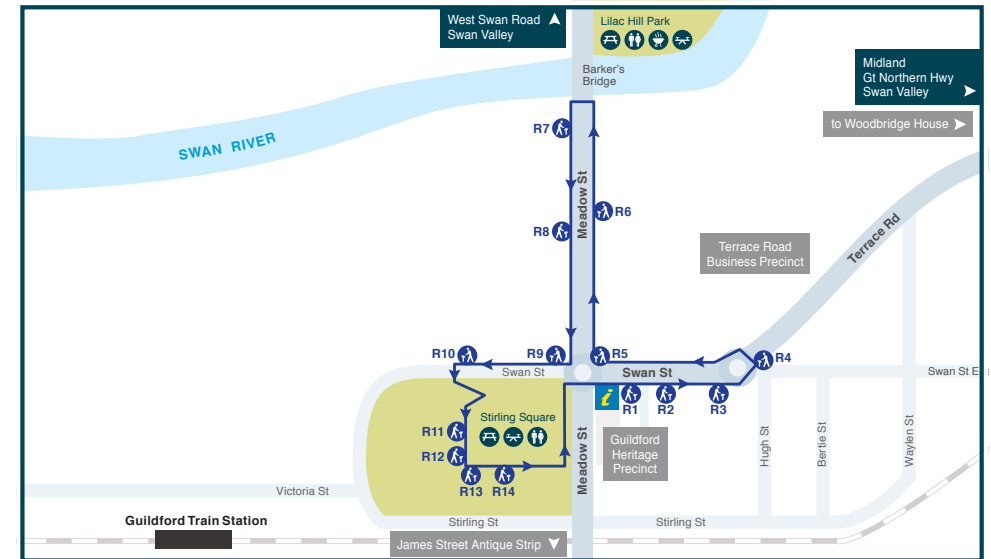
The River Ramble

This trail passes the grounds of the former Bell Bros business, the historic Rose and Crown Hotel (c.1841) and Padbury's Store (c.1869), located in the Terrace Road business precinct.

Walter Padbury is an important figure in the town's history. He was Guildford's first mayor (in 1887) and one of Western Australia's most successful early entrepreneurs - at one time, the biggest landowner in the colony!

Also en-route, Barker and Gull's Warehouse is an example of the numerous retail and wholesale businesses that existed in Guildford during the height of the town's importance as a port and market town to the Swan River colony.

The trail also takes in Moulton's Landing on the banks of the Swan River - where you can learn about the tragic Abraham Moulton and the river's role in early Guildford - before returning via a series of heritage homes to picturesque Stirling Square and the Swan Valley Visitor Centre.



Not all heritage sites are open to the public.

- | | |
|---|-------------------------------------|
| R1. Guildford Courthouse | R8. Moulton's Cottage |
| R2. Bell Bros, The Yard | R9. Riversleigh (Crossland's House) |
| R3. Rose and Crown Hotel | R10. Two-storey House |
| R4. Padbury's Store | R11. Gateway to the Inland |
| R5. Barker and Gull's Warehouse | R12. Spiritually Rich |
| R6. Garden Hill | R13. An Island Village |
| R7. Moulton's Landing and Barker's Bridge | R14. Sugar Gums |



The Stirling Square Circuit

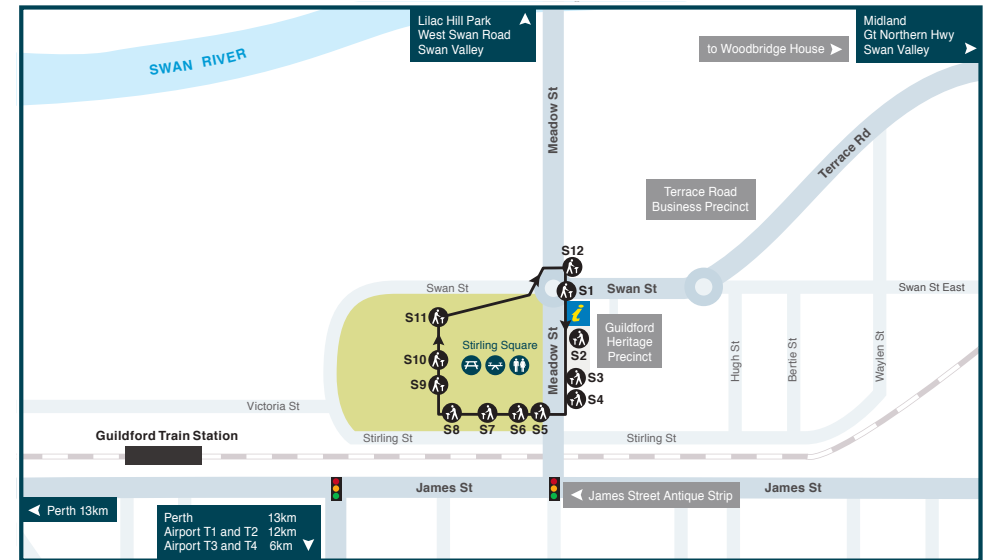
A shorter walk for those with less time, this trail incorporates the best of the historic Meadow Street precinct including the Colonial Gaol (c.1841), the Courthouse (c.1866) and Taylor's Cottage.

It passes the Mechanics Institute, established in 1865 to provide education for the working men of the town. The building has always had a strong connection with Guildford community life.

Today, as in the past, the institute continues to be utilised for entertainment and educational activities.

The trail then loops out into the lovely tree-lined parkland of Stirling Square. Guildford was known as the town of roses in the 1930s and visitors will find many in Stirling Square. Here, there are many interpretive panels that provide visitors with a good insight into the core of old Guildford town.

Typical of English town planning during the colony period, impressive St Matthew's Church is located in the exact centre of Guildford and within this village green. It is today one of Western Australia's best examples of Gothic Revival architecture. The park is also a traditional Aboriginal meeting place.



Not all heritage sites are open to the public.

- | | |
|--------------------------|----------------------------------|
| S1. Guildford Courthouse | S7. Sugar Gums |
| S2. Colonial Gaol | S8. An Island Village |
| S3. Taylor's Cottage | S9. Spiritually Rich |
| S4. Mechanics Institute | S10. Gateway to the Inland |
| S5. Stirling Square Guns | S11. A Sought-after Address |
| S6. Gunners' Day | S12. Barker and Gull's Warehouse |





Swan Valley Visitor Centre

Visitor information, maps, souvenirs,
accommodation, masterclass and tour bookings.

Guildford Courthouse (c. 1866)
Corner Meadow and Swan Streets, Guildford
Open 7 days 9am-4pm (closed Christmas Day)
Phone (+61 8) 9207 8899
visitorcentre@swan.wa.gov.au

AWARDED AUSTRALIA'S BEST VISITOR CENTRE



swanvalley.com.au

SWAN VALLEY
VINEYARDS SINCE 1829



www.swan.wa.gov.au



Swan Valley Visitor Centre

Open seven days, 9am to 4pm

Cnr Meadow and Swan Sts, Guildford

9207 8899 | visitorcentre@swan.wa.gov.au

www.swanvalley.com.au



city of swan

City of Swan

2 Midland Square Midland

PO Box, 196 Midland WA 6936

9267 9267

 /cityofswan

 /cityofswanwa

