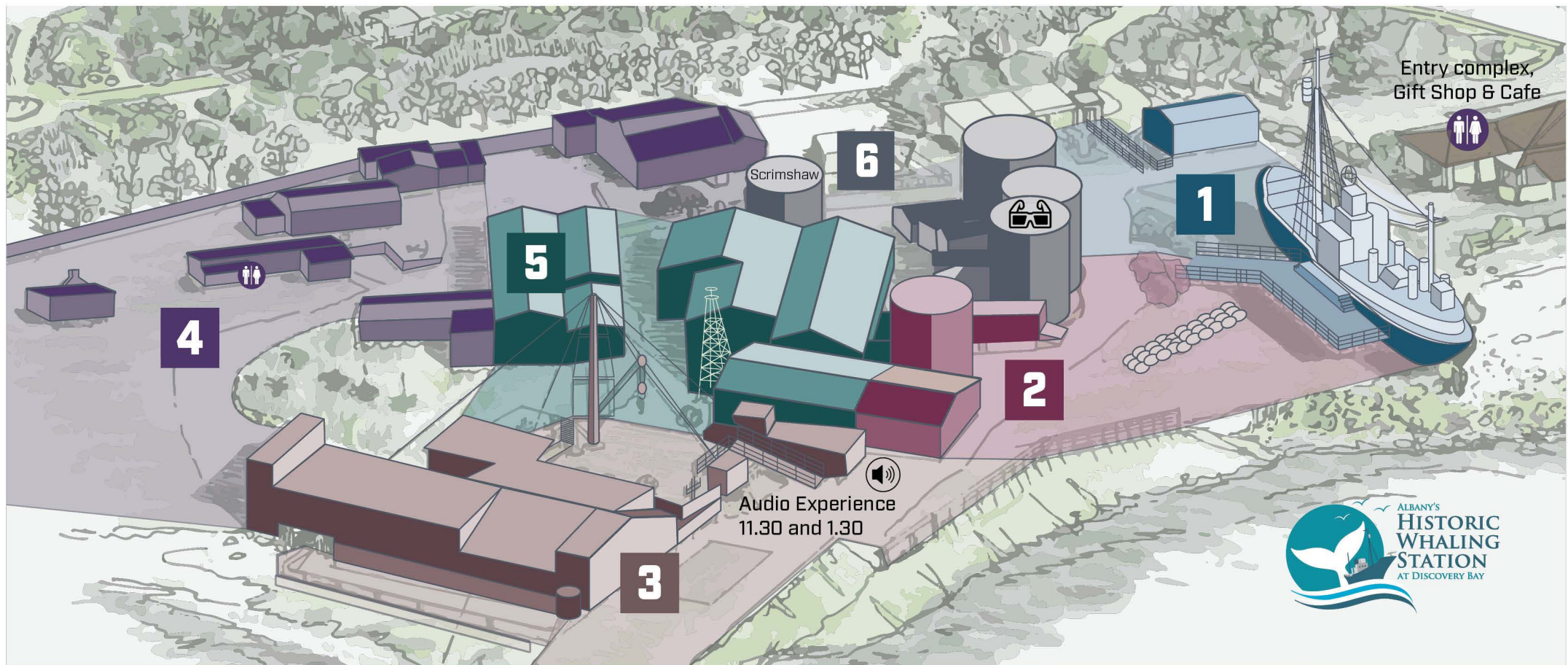


HISTORIC WHALING STATION GUIDE



1 CHEYNES IV WHALE CHASER



CLIMB ABOARD AND EXPLORE

2 WHALING COMPANY HISTORY



UNDERSTAND OUR DIVERSE PAST

3 PROCESSING THE WHALES AND AUDIO



ORIGINAL FACTORY AND EQUIPMENT

4 SPOTTER PLANE, MCBRIDE'S HUT AND CHARTS



WHALES FROM THE AIR EXHIBIT

5 WHALE SKELETONS AND ARTEFACTS



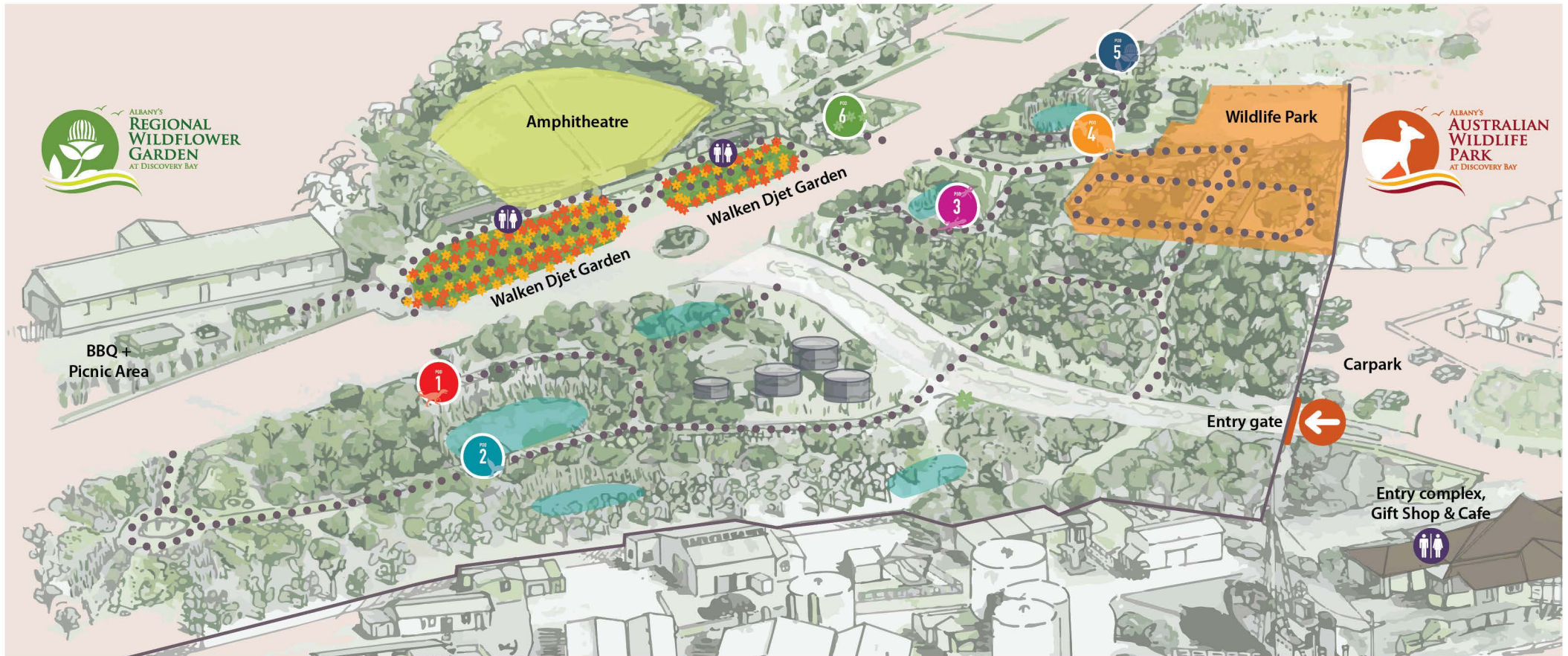
GIANTS OF THE SEA EXHIBIT

6 MOVIE THEATRES AND SCRIMSHAW DISPLAY



THE ART OF SCRIMSHAW EXHIBIT

REGIONAL WILDFLOWER GARDEN & AUSTRALIAN WILDLIFE PARK GUIDE



Discovery Trail Information Pods

Gondwana, Geology, Biodiversity & Hotspots



History of the Settlers & Our Whales



Wetlands & Adaptation of Species



Australian Wildlife Information



Future Development



Walken Djet (Rainbow Flower)



The main garden, Walken Djet, has 8000 plants, carefully chosen to represent the unique biodiversity of our South West region.

Separate sections have been designed within the garden featuring 50 species, including rare and endangered plants, found within the four coastal regions of Albany, Bremer Bay, Ravensthorpe and Esperance.

To access our Garden & Wildlife Park, please exit Whaling Station entry complex and walk to the orange gate in carpark. Enter code listed to unlock gate.

Entry Gate Code: