



# Visit The Torch

## The Torch



Easy Read

This is an Easy Read resource about  
visiting The Torch

# About The Torch



The Torch supports First Nations artists in prisons and post-release in Victoria to explore their Indigenous culture and identity through practising art.



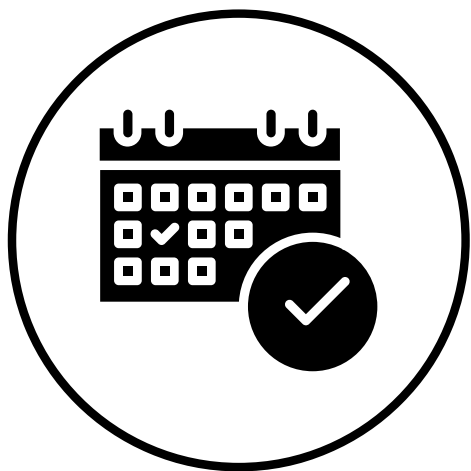
The Torch takes no commission on sales, meaning that 100% of the proceeds of each sale go directly to the artist.



Artwork is available to view and purchase online at:

<https://thetorch.org.au/>

# Visiting The Torch



The Torch is open by appointment for artwork viewings on Tuesdays, Wednesdays and Thursdays via appointment only.

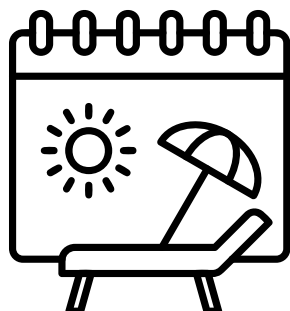


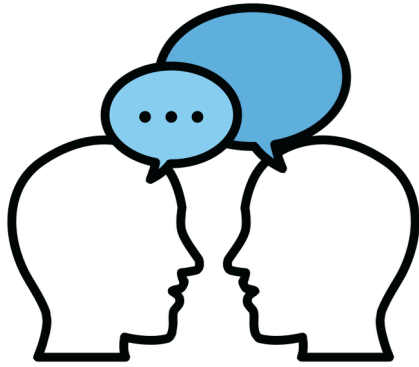
The Torch located at The Torch, Wurundjeri Country, 146 Elgin Street, Carlton, Victoria, 3053.

There are no step-free entrances to the building. Please contact us if you need more information.



The Torch is closed on Public Holidays.





Please contact us if you want to check that we are open before you visit.



Service animals are welcome in the gallery.



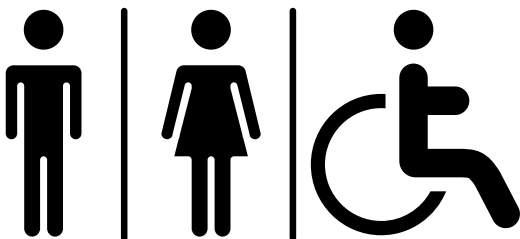
The Torch is usually a quiet place, but can be noisy if there are a lot of people. We recommend people with hearing sensitivities bring hearing protection for when it is noisy.



There is an all-gender ambulant toilet located on the ground floor.

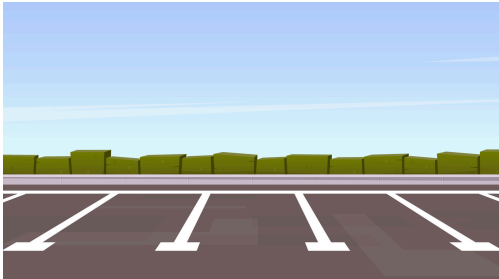
The door to the toilet has a small pull handle which may be difficult for someone with hand dexterity issues to use.

There are no accessible toilets on the premises.



The closest public accessible toilet is in Lygon Court shopping mall one block away from The Torch.

# Getting Here



## Parking:

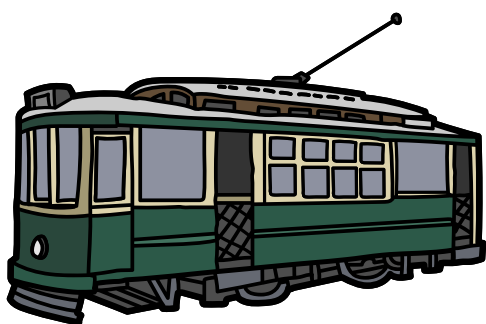
You can park on the street. On street parking is available on Elgin Street and the surrounding area, however it is limited.



You can park in a car park. The nearest available is Lygon Court car park located at 333 Drummond St Carlton between Faraday and Elgin streets, one block away from The Torch.



There is no accessible carpark on site. The closest accessible parking spot can be found on Drummond Street between Faraday Street and Elgin Street one block away from The Torch.



## Tram:

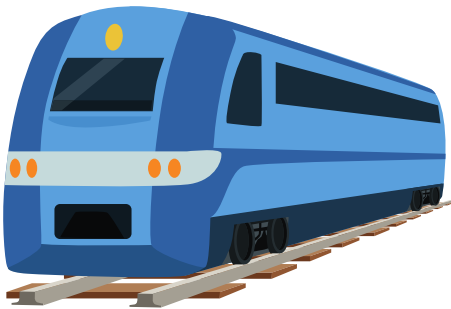
- An accessible tram super stop is on the corner of Lygon and Elgin Streets, one block away from The Torch and services tram routes 1 and 6.
- Route 96 accessible tram super stops are also two blocks away on Nicholson Street.

Use [tramTRACKER®](#) app to check the next three trams at your stop. The wheelchair icon indicates low-floor tram.



## Bus:

- Routes 200 and 207 run along Lygon Street, one block away from The Torch.
- Routes 250 and 251 run along Rathdowne Street, half a block away from the Torch.



## Train:

Melbourne Central Railway Station which is approximately a 26 minute walk to and from The Torch. Accessible station access is via lift, train platform access is via portable ramp and raised platform.

# Contact information



Email: [info@thetorch.org.au](mailto:info@thetorch.org.au)



Call: (03) 9042 1236



Visit our website for more information  
[www.thetorch.org.au](http://www.thetorch.org.au)



Follow us on instagram  
[@thetorchvic](https://www.instagram.com/thetorchvic)



Follow us on facebook  
[@thetorchproject](https://www.facebook.com/thetorchproject)