

### 11. Service Clubs

Throughout the years the community have supported a number of service clubs including the Masonic Lodge, Buffalos, IOOFMU, Rotary and Rotaract, Lions and Lionesses, Apex and Probus. The sixties saw Scouts and Girl Guides begin.

### 12. Social Activities

Social activities provided respite from hard work and opportunities to meet people. Memorabilia displayed includes religious items used by the 'travelling Brothers', sporting artifacts and trophies, stories and photographs depicting some of the many activities undertaken in the name of fun! The polocrosse racket was purportedly used by the Prince of Wales during one of his unofficial visits to Canonba Station, Miowerra.

### 13. Barber Shop

Bob Giddy was a barber in Nyngan from 1904 until 1964. On display are some of his 'tools of the trade' and his barber chair. This section has a wonderful selection of tobacco products and grooming items used by men and women from the district.

### 14. Communication

The manual telephone exchange operated in Nyngan until 1988. A section of the exchange is on display with a range of locally used telephones and samples of the insulators from the country lines. On the shelves are a few typewriters and computer machines from 1925 till the 1980s, that were common place prior to computers and email. In the glass cabinets are excellent examples of cameras and photographic items. This area also outlines the history of the Bogan Shire.

As you go through the archway, you are entering the area that was the Railway Refreshment Room kitchen. The doorway was bricked off after the flood in 1990 and the SES established their headquarters in this section of the building. The thoroughfare was reestablished in 2020.

### 15. Homeware

This collection is mostly, but not all, post the World Wars. Many of the items here will be familiar and bring back memories. 2020 was the 100th anniversary of the visit of The Prince of Wales to Nyngan. Spend some time to read the letter from one of the young ladies who attended the ball and thankyou letters from Edward (The Prince of Wales), Lord Louis Mt Batten and other dignitaries who attended. The green uranium glass fluoresces under UV light.

May Gibbs was an Australian children's author and illustrator, who created the 'Gumnut Babies' in 1916. The 'Gumnut Figurine' dates from 1938 and the plates are the 1994 limited edition collection. Depression glass was mass produced cheaply to allow everyone access to something bright and pretty during the hardships of the depression from the mid 1930s. As a consequence, the glass did not have a long life expectancy and broke easily. Green glass contains uranium oxide and fluoresces under UV light.

### 16. Research

Nyngan Museum provides a research service to the public who wish to locate information about their ancestors from the region. Our resources are limited, but we can sometimes find things of interest.

### 17. Education

All photos that have been shared with the museum are stored digitally, with some enlarged on display. If you know the names of the people in the photos in the two folders, please add their names to the tables under the photo. An item of note is the 1905 Nyngan Convent School badge that belonged to Aimee Stamm.

### Upstairs—please use the handrail

As you reach the top of the stairs you will see the 1915 photograph of Daisy Turley, taken by her brother Bill. There is another photo of Daisy in the bookcase in the research area.

Relax and listen to the radio as you wander through this display which features:-

### 18. Nursery

Typical furniture and toys that would be found in the nursery. Wander past the wash stand and commode chair, and enjoy the selection of decor items on display in the typical lead light china cabinet.

### 19. Red Cross and Hospital

This display features the World War 1 wheel chair from the Red Cross and a selection of items that were available to meet your health requirements, including bottles of pills, potion and lotions.

### 20 Haberdashery

Luxury Items for more formal occasions are displayed, including a seal fur wrap and 1937 tails. Enjoy perusing the artifacts of everyday life for ladies, with a range of sewing machines dating from 1871 onward, and a multitude of sewing 'bits and bobs' including a lace making pad and bobbins.



**Challenge:** It seems everyone had a pair of round glasses. Your challenge is to see how many pairs you can find as you wander through the displays. Tell someone how many you found as you leave.

**Adults: \$5.00 Children: \$2.00**

## Admission to the Museum:

Our shop contains a variety of region relevant gifts and souvenirs including our 'Big Bogan' range.

### 1. Information Centre & Shop

Our Visitor Information Centre provides local, district and regional tourist information as well as a selection of tourist brochures.

## Guide and Information

*Please take one!*



# Welcome to Nyngan Museum

## Site Map Inside

### 2. Mines Display

This display was set by the Girilambone Copper Company in 1967 and remodelled by Aeris Resources in 2020. On display are artefacts and photographs from the early days of mining in the 1880s. Modern mining in the Tritton area began in 1992 at the

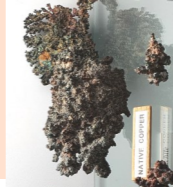


Murrumbidge open pit and heap leach operation, shown in a 3D model depicting the open-cut copper mine and processing plant. GCC

pioneered a new metallurgical technology involving solvent extraction and electrowinning processing to produce the 99.999% pure copper cathode sheet.

Open pit mining ended in 1999.

Displayed are copper ore minerals including the gossan azurite and malachite, chalcocopyrite and some extraordinary native copper samples.



### 3. Town Business

The town of Nyngan has changed considerably since it began in the 1880s. Our collection includes the front doors, curved glass panel and silverware from the California Milk Bar. The 1888 Australian Stock Bank ledger and other items from an era when writing was done with ink.



The 1920s 'boy mannequin' on display is from Payne's Store. The green scales were at the entrance to the Chemist, and then to the Jockey club and were in use until 2018. Look out for 'With Compliments' gifts from the banks, bakers and general stores; Bottles from the Nyngan Cordial manufacturers; Stories about some of the businesses and pictorial displays of the tragedy when Barringer's General Store burned down in 1960.

For further information contact:

Museum: 6832 1056

Email: [nynganmuseum@yahoo.com.au](mailto:nynganmuseum@yahoo.com.au) or  
Bogan Shire Council

Admin Office: 6835 9000

Email: [admin@bogan.nsw.gov.au](mailto:admin@bogan.nsw.gov.au)  
Web: [www.bogan.nsw.gov.au](http://www.bogan.nsw.gov.au)



The new Coolabah Police Station was constructed in 1928 of weatherboard and iron roof on brick foundations. It comprised two bedrooms, living room and dining room, kitchen, bathroom and office. In addition to the main building, the station had a stable, two cells and a room for storing equipment and fodder for the horse.

### 23. Coolabah Gaol

and their families who lived along the railway in tents

fettlers' trikes, two of which have returned. Try to imagine what it would have been like for the fettlers

The fishplates have one small side to fit into this line, and the larger side to the new, heavier track. This



### 22. Railway Trike and Fettler's Shed

The section of railway line was laid down with the original line in 1882.

### 4. Platform

The Nyngan Railway Station closed in 1990, following the flood which demolished the line to Bourke. Sit a while and enjoy the scenery, or you can walk yourself on the platform scales.

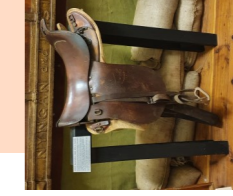
The 'Callboy' bike was the communication technology of the era.



### 5. Railway

The railway arrived in 1883 and the town was established. At that time the roads were mere tracks used by horses, camels and buggies. The main form of transport was the train. The station was built from locally made bricks and had an excellent Refreshment Room. The Railway Station was the first location to house the telegraph and then telephone.

### 6. Remembrance



Many men and women from the Nyngan District have been involved in world conflict. Take a moment to read some of their stories and remember their sacrifice. The triptych honor roll was hand painted by Ethel White following the WWI conflict.

### 7. The Original Inhabitants

The Wongaibon people lived a nomadic existence, with the Bogan River not being a permanent water source. Their lands covered 70,000 square kilometres and included the tribes, 'Bungan', 'Myall' and 'Nyngan'. We have a selection of early tools and the story of Gloria Shipp, the first Aboriginal Woman Priest.



### 8. Dolls

Dolls on exhibit range from home made rag and papier mâché dolls, early 20th century imported porcelain dolls to battery operated toys from the 1970s. All loved and cherished by children over the years, as evidence by the wear. Some of the dolls are wearing baby dresses from the era including a 1900s Christening Gown.



### 9. Pioneering

As white settlers advanced across the region, they brought tools and practices to develop pastoral stations and homesteads. Tools for building, animal husbandry

and pest eradication are displayed as you walk

through this exhibit, culminating in the kitchen whose wall and stove were removed from 'Gulgooin Station' and erected here.

Some kitchen utensils from the 1890s till the second World War, have been added to the display. The Wedding cake dates

from 1908,

with the dress,

grooms shirt

and other

items from the

Nott family.



### 10. Palais Theatre & Flood

The Palais Theatre, built in 1927, was

demolished in 2019. The tiles,

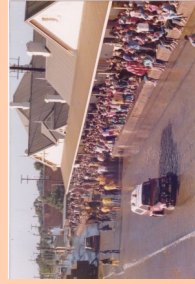
curtains and seats in our

theatrette were rescued from

the theatre. Sit a while and

watch the video outlining

events during the 1990



### 21. Shed

There are many different areas displayed in the shed:

- ◆ **Laundry**—with a history of clothes cleaning aids from the copper, hand mangles and tubs to the electric washing machine.



- ◆ **Jackaroo Camp**—featuring a hand made stretcher bed.

- ◆ **Bathroom**—(under construction) 1920s Prince Of Wales Bathroom from 'Canonba Station' combined with a bath and chip heater from an early farm house



- ◆ **Transport**—a 1880's buggy, a restored 1924 sulky and children's pedal toys.



- ◆ **Brooklyn Collection**—the buggy and collection in the centre cabinet belonged to the Singleton family who moved to 'Brooklyn' 10 km east of Nyngan in 1906.



- ◆ **Palais Theatre**—two carbon arc projectors and other film artefacts and projectors that were in the projection room of the Palais Theatre from the 1920s.
- ◆ **Workshop**—(under construction) featuring vintage tools