

Emu Valley Rhododendron Garden

BURNIE – NORTHWEST TASMANIA

LEGEND

- R Reception building**
Information / Purchase tickets
Restrooms
Garden Café
Start points for walks

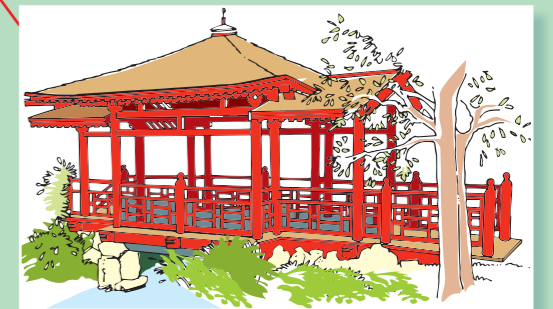
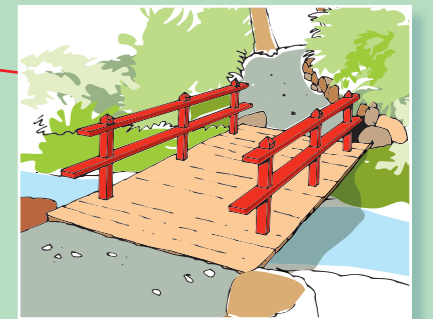
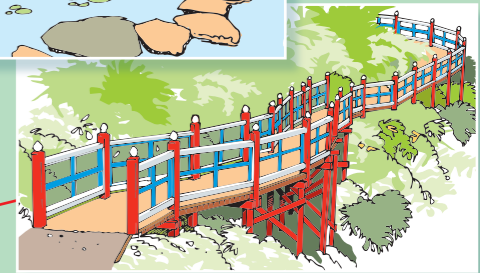
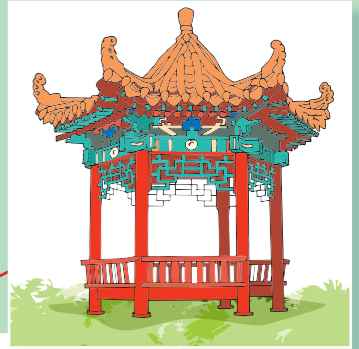
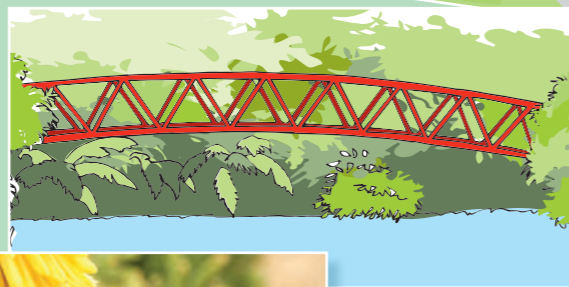
A Man Fern Gully Loop: 5 - 10 minutes return

B Short Walk: 20 minutes return + 1 Lake

C Medium Walk: 30 minutes return + 2 Lakes

D Long Walk: 45 - 60 minutes + 3 Lakes

- 1 Entrance to Garden
- 2 Caretakers Cottage (private residence)
- 3 Fountain
- 4 North American Gazebo
- 5 The Boardwalk Bridge
- 6 Reflection Pool
- 7 Japanese Covered Bridge
- 8 Japanese Foot Bridge
- 9 Japanese Traditional Tea House
- 10 Aerial Walk
- 11 Chinese Pavilion
- 12 Hybrid Hideaway Kid's Chill Zone
- 13 Main Gazebo
- 14 Olympus Bridge
- 15 Propagation Nursery (staff Only)
- 16 Nursery — Plant Sales



Proudly sponsored by **DESIGN EYE**
CREATIVE