

# Cobram Regional Park



## Visitor Guide

Cobram Regional Park covers 470ha of river frontage with many sandy beaches. Bordered by a wide stretch of the Murray River and home to majestic River Red Gums and a fantastic variety of birdlife, the park is a great place to discover nature.



Scotts Beach

*"Gulpa gaka anganya - Gaka Yawal Ngulla  
Yenbena Yorta Yorta Woka"*

Welcome friend - Come walk with us the people,  
on Yorta Yorta Country.

### Enjoying the park

Enjoy walking, dog walking, picnicking, camping, canoeing, rafting, kayaking, cycling, fishing, horse riding, orienteering, bird watching, nature appreciation and sightseeing.

#### Walking, cycling and horse riding

There are many walking tracks throughout the park. A shared use (walking and cycling) track links the town of Cobram to Scotts Beach and Quinns Island. Ride along the river on River Road or wind through the magnificent River Red Gum forest.

Stay on designated dirt and gravel roads while riding through the park to help ensure its conservation and preservation for future generations.

#### Camping and picnicking

Dispersed camping is permitted in most of the park. Camping is not permitted at **Scotts Beach**. Camping is permitted at nearby **Horseshoe Bend** that has a boat ramp.

**Big Toms Beach** has an expansive 300m beach and plenty of flat, grassed areas. The low entry into the water here makes launching a rubber dingy or canoe really easy. The campground is an easy 15-20 minute walk into town. Access for Big Toms and neighbouring Little Toms Beach is via Wondah Street. Follow the track further west along the river to reach **Dead End Beach campground**.

**Dead River Beach** is just to the north-west of town along a track off Racecourse Road. There are picnic areas to the north at Big Tom's and Little Tom's Beaches (access via Wondah Street).

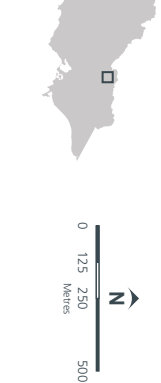
**Quinns Island** is a waterbird haven formed by a bend in the river that has been cut off by Scotts Creek. Pedestrian access to the island is via a bridge off River Road. The island has two kilometres of defined walking trails, a large bird hide and beaches. A number of Aboriginal artefacts such as scar trees, flint tools and middens, have been found on the island.

For a more remote wilderness experience, venture about 16km south-east of Cobram to **Cobrawonga Island**.

**Thompson's Beach**, located near the bridge at the north-eastern edge of Cobram, is known as Victoria's largest inland beach. It has picnic and barbecue facilities, a kiosk, boat ramps, toilets and a playground. Murray Waters Boat and Bike Hire operate from the beach (phone - 5872 2132).

#### Fishing

Common species include Golden Perch (Yellow Belly) and Murray Cod. Freshwater Catfish and Trout Cod may be caught in the Murray River, but are a protected species and must be immediately returned to the water unharmed. The introduced European Carp is often caught by anglers and must be destroyed by law.



- Car parking
- Information
- Toilets
- Picnic table
- BBQ (electric)
- Camping area
- Bridge
- Kiosk
- Boat ramp
- Bird hide
- Hospital
- Police station
- Highway
- Main road
- Sealed road
- Unsealed road
- Seasonal closure
- Walking track

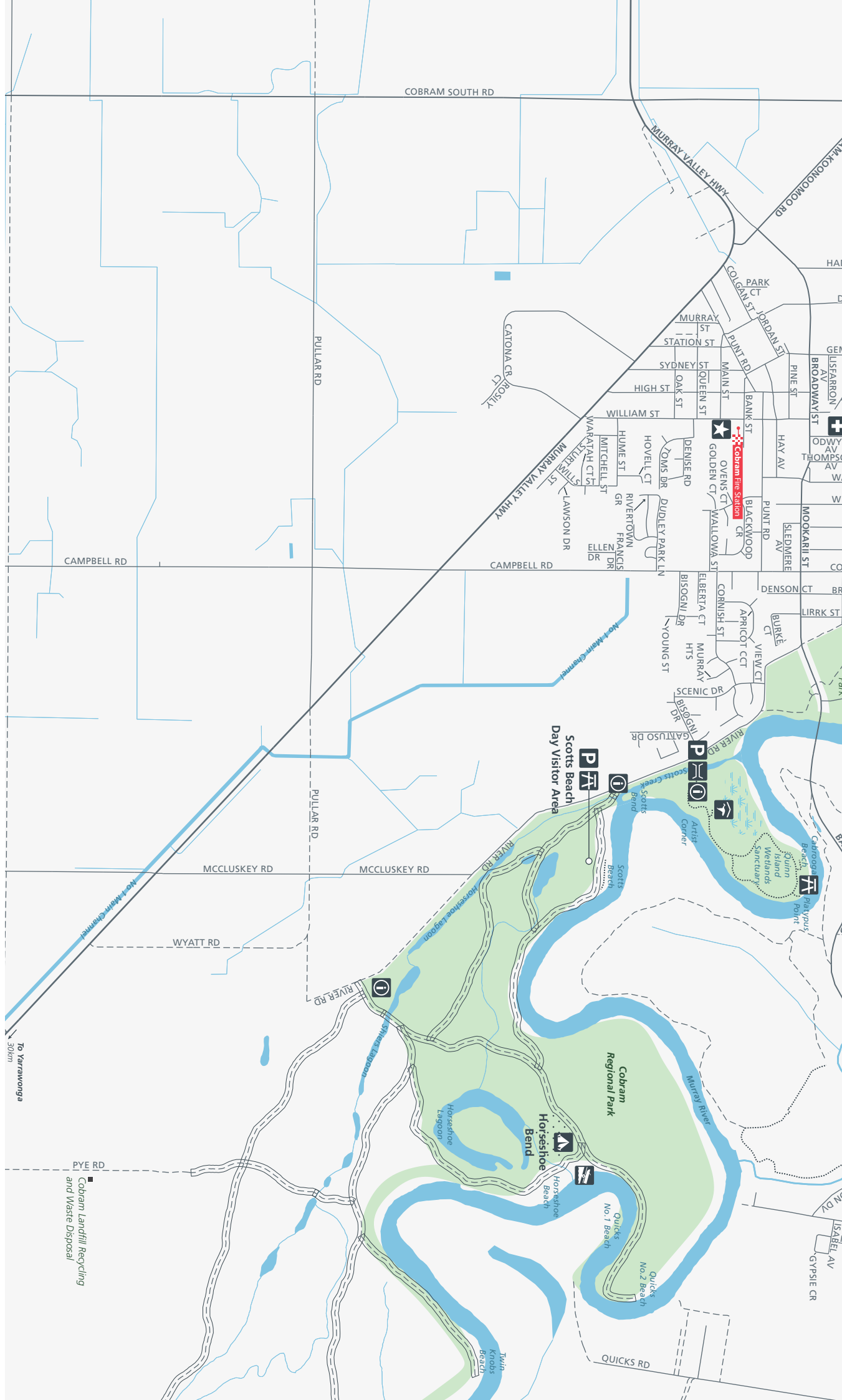
- Major river
- Minor river
- Stream/creek
- Waterbody
- Wetland
- Park/reserve
- Camping area

[www.parks.vic.gov.au](http://www.parks.vic.gov.au)

Disclaimer: Parks Victoria does not guarantee that this data is without flaw of any kind and therefore disclaims all liability which may arise from you relying on this information.

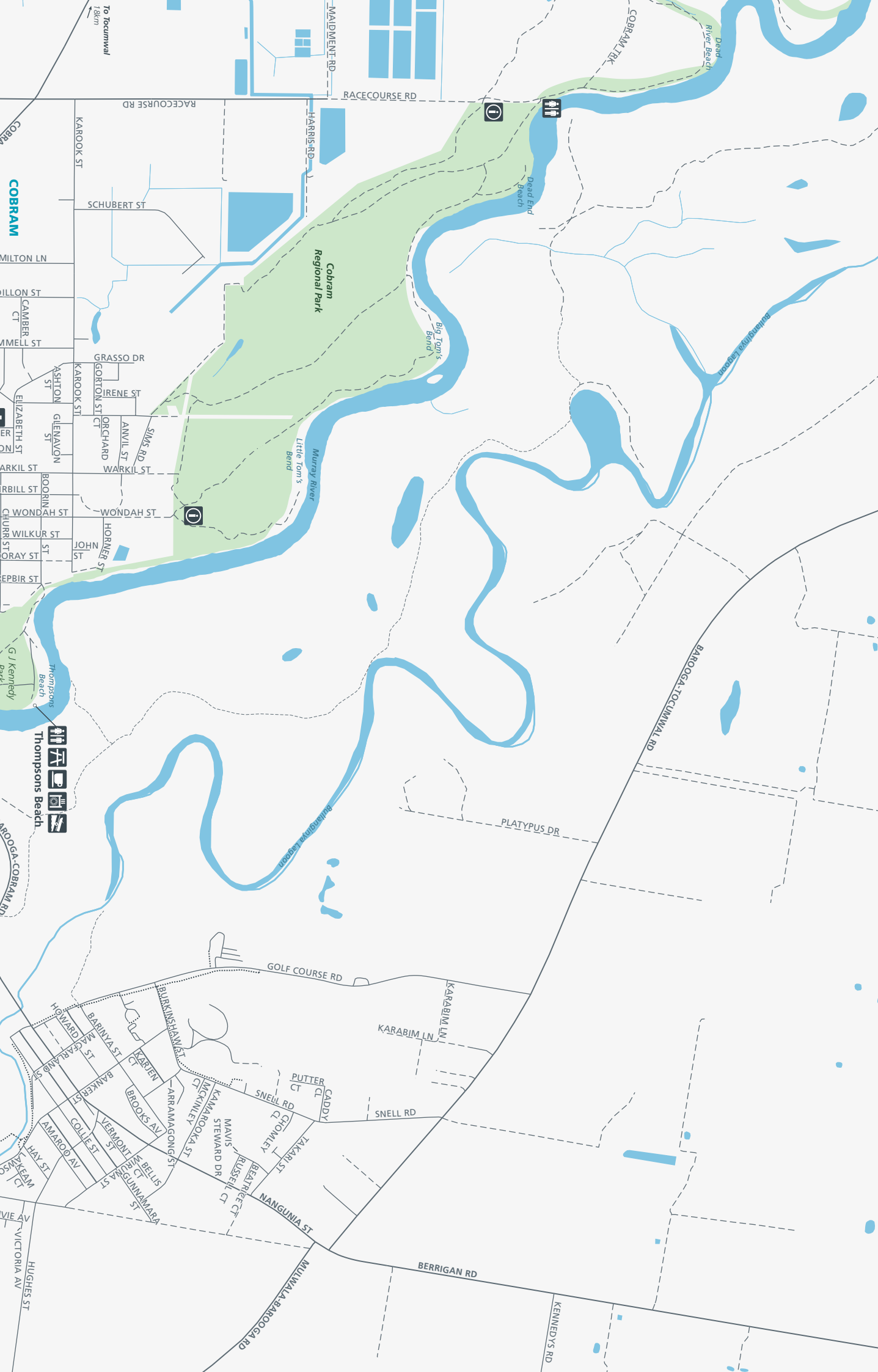
Data source acknowledgements: State Digital Mapbase. The State of Victoria and the Department of Environment and Primary Industries.

Cartography by Parks Victoria June 2014  
For mobile App search for Avenza PDF Maps



Cobram Landfill Recycling and Waste Disposal

# Cobram Regional Park



## For further information

Call Parks Victoria on **13 1963**  
or visit [www.parks.vic.gov.au](http://www.parks.vic.gov.au)

Cobram Barooga Visitor  
Information Centre  
Corner Punt Rd and Station St  
Cobram VIC 3644  
Freecall: 1800 607 607  
Phone: 03 5872 2132  
[www.cobrambarooga.com.au](http://www.cobrambarooga.com.au)

## Caring for the environment

Help us look after your park  
by following these guidelines:

Please take rubbish with you for  
recycling or disposal

All plants, animals, historical and  
archaeological sites and  
geographic features are  
protected by law

Dogs are permitted in the park  
and must be kept on a lead

Firearms are prohibited

No fires may be lit on a day of  
Total Fire Ban. Portable gas or  
electric barbecues may be used  
provided:

- a 3-metre area is cleared of  
anything flammable
- at least 10 litres of water is  
available for immediate use
- an adult is in attendance *at  
all times*

Cobram Regional Park is in  
the Northern Country Total Fire  
Ban District

**It is your responsibility to know  
if it is a day of Total Fire Ban.** If  
in doubt call the **Victorian  
Bushfire Information Line  
on 1800 240 667**

Collect only dead wood from the  
ground for campfires

Vehicles, including motor bikes,  
may only be used on formed  
open roads. Drivers must be  
licensed and vehicles registered  
and roadworthy

## Healthy Parks Healthy People

*Visiting a park can improve  
your health, mind, body and  
soul. So, with over four million  
hectares of parkland available  
to Victorians, why not escape  
to a park today!*



Fishing in the Murray River requires a New South Wales (NSW) fishing licence, even if you are standing on the Victorian bank. A Victorian fishing licence is required if fishing waters south of the Murray River. Contact fisheries officers from either state for details - Victoria 136 186 or NSW 1300 550 474.

## Plants and animals

Here you will see native wildlife such as kangaroos, wallabies, koalas in virtually untouched River Red Gum forest. Kingfishers, Egrets and other water birds are abundant in the lagoons and billabongs of this nature haven.



Kingfisher

## History

The area is known to have been occupied by the Yorta Yorta language speaking people prior to white settlement. Charles Sturt explored the Murray downstream of the present town site in 1830 and, in 1838, he led a droving party with 300 head of cattle through the district, en route to South Australia. Cobram station was taken up in 1845 by Octavius Phillpotts.

A store, post office and school were in operation by 1880 and a sawmill was set up in 1883. In 1886 locals lobbied for the extension of the railway into the area. Hotels, businesses, a school, a doctor, a foundry, banks, a cordial factory, stores, churches and a newspaper - had appeared by late 1888 when the first train arrived. The railway signalled the decline of the river trade but paddlesteamers were still a part of the passenger service in the early days of the town. A punt service was established in 1889 and the first bridge was opened in 1902.

At the end of World War II the area was used for a major soldier settlement scheme. Moreover, Italian immigrants, who first arrived in the 1920s, began to migrate in far greater numbers after 1945 and they are a significant presence to this day.

## Be Fire Ready and Stay Safe

**On days of forecast Code Red Fire Danger this park will be closed for public safety.** If you are already in the park you should leave the night before or early in the morning for your own safety.

Closure signs will be erected and rangers will patrol where possible, however you may not receive a personal warning that the park is closed so check by calling **13 1963** or visit [www.parks.vic.gov.au](http://www.parks.vic.gov.au).

For up to date information on fires in Victoria or general fire safety advice call the **Victorian Bushfire Information Line on 1800 240 667** or visit [www.emergency.vic.gov.au](http://www.emergency.vic.gov.au).

## Location and access

Cobram Regional Park is approximately 244 km north of Melbourne. Access Scotts Beach and Horseshoe Bend via River Road. Access to Little and Big Roms Beachs is via Wondah Street in Cobram. Dead End Beach can be accessed via Wondah Street or Racecourse Road.

June 2014

*Printed on Australian-made 100% recycled paper*