



(8) Botanic Gardens Golf Course

Sale Council, around the time of World War One, opted to develop Victoria Park as its main garden. The neglect of the Botanic Gardens strengthened the hand of sporting clubs in their quest to relocate. The lease of the Gardens to the Sale Golf Club 1922-1950, and the accommodation given to other sports, almost doomed the Gardens.

9) REHABILITATION IN 21ST CENTURY

A re-awakening of the value of Botanic gardens has enabled the remnants of the Sale Botanic Gardens to be regenerated. A Conservation Plan, reclamation of part of the Fauna Park, a replanting programme and the integration of the old gardens into the margins of Lake Guthridge and into the more recently constructed Lake Guyatt, are promising developments in keeping with the original purposes of the Sale Botanic Gardens.

For Further Information call the
Wellington Shire

1300 366 244

www.wellington.vic.gov.au



Lake Guthridge Parklands



WELLINGTON
SHIRE COUNCIL
The Heart of Gippsland

Images provided for this brochure are from Sale Historical Society Collection, and Synan Collection.

THE SALE BOTANIC GARDENS

A HISTORY



(7) Lake Guthridge from Public Gardens



(5) Joyce Murphy Canoe Tree
Lake Guthridge 1940s



(9) Old Trees & New - Botanic Gardens

DESIGN: www.innovative.net.au

1011



WELLINGTON
SHIRE COUNCIL

The Heart of Gippsland

The Sale Botanic Gardens A History



(4) Robert Topping



(4) John James English



(7) Nehemiah Guthridge



(1) Botanic Gardens View

1) BEGINNINGS

The Sale Botanic Gardens began in 1860 following a petition by the leading residents of Gippsland. Around 34 acres in size, the Gardens at first comprised the higher ground off Guthridge Parade and the eastern portion of the swamp which, in time, became Lake Guthridge. The Gippsland petitioners were playing catch-up. Other important towns in provincial Victoria already had botanic gardens. Sale, with notions of becoming the capital of Gippsland, did not wish to miss out on the civic prestige that gardens conferred.

2) THE COTTAGE

In 1870 a cottage for a curator of the Gardens was built. Robert Wain became the best known early curator. A resident curator was essential as damage was being done by stray cattle and footloose youths.

3) EARLY PLANTINGS

The townspeople celebrated Queen Victoria's birthday in 1872 by gathering for the first major planting of trees and shrubs. The donated trees were in most cases planted by the donors themselves. Gravel walks meandering through the new plantations were christened with names such as Bachelors' Walk and Lovers' Walk, but these names did not survive the jollity of the occasion.

4) FAMOUS ADVISERS

The Gardens were laid out and planted by prominent townsmen, notably Councillor Robert Topping and Councillor John English with the assistance of curators and local nurserymen. Sale was fortunate to receive plant stock from the distinguished botanist Ferdinand von Mueller in 1870, and advice from outstanding landscape architect, William Guilfoyle, who inspected the Gardens in 1881.

5) ABORIGINAL PRESENCE

The Gunai-Kurnai were the original occupiers, as were stately river red gums. One 'canoe tree' on the water's edge became a favourite place for family photographs.

6) GATES

The Gardens were surrounded by fencing, to keep roving stock out, and elaborate gates were constructed, facing Foster Street.

7) LAKE GUTHRIDGE

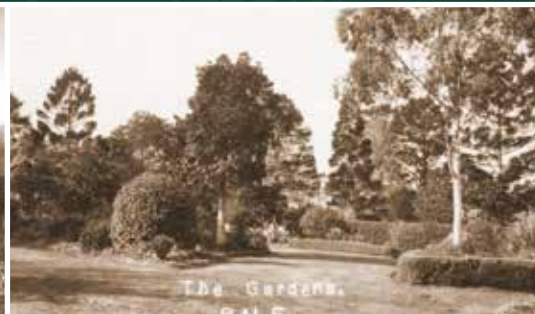
This was named after Sale's first mayor, the visionary Nehemiah Guthridge, who urged Sale Council to convert an unsightly, smelly swamp into a lake. Through his advocacy, this water body in 1884, became a Reserve for Water Conservation and Extension of the Botanic Gardens.

8) LONG DECLINE

The Gardens went into long decline when



(1) Public Gardens



(1) Botanic Gardens View - Circa 1890s



(2) Botanic Gardens House Sale



(6) Gates - Dr Hagenauer's Driver 1913



(3) Pine Walk Sale Botanic Gardens Circa 1900