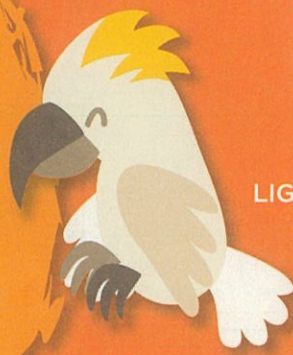


REGIONAL MAP OF WALGETT SHIRE

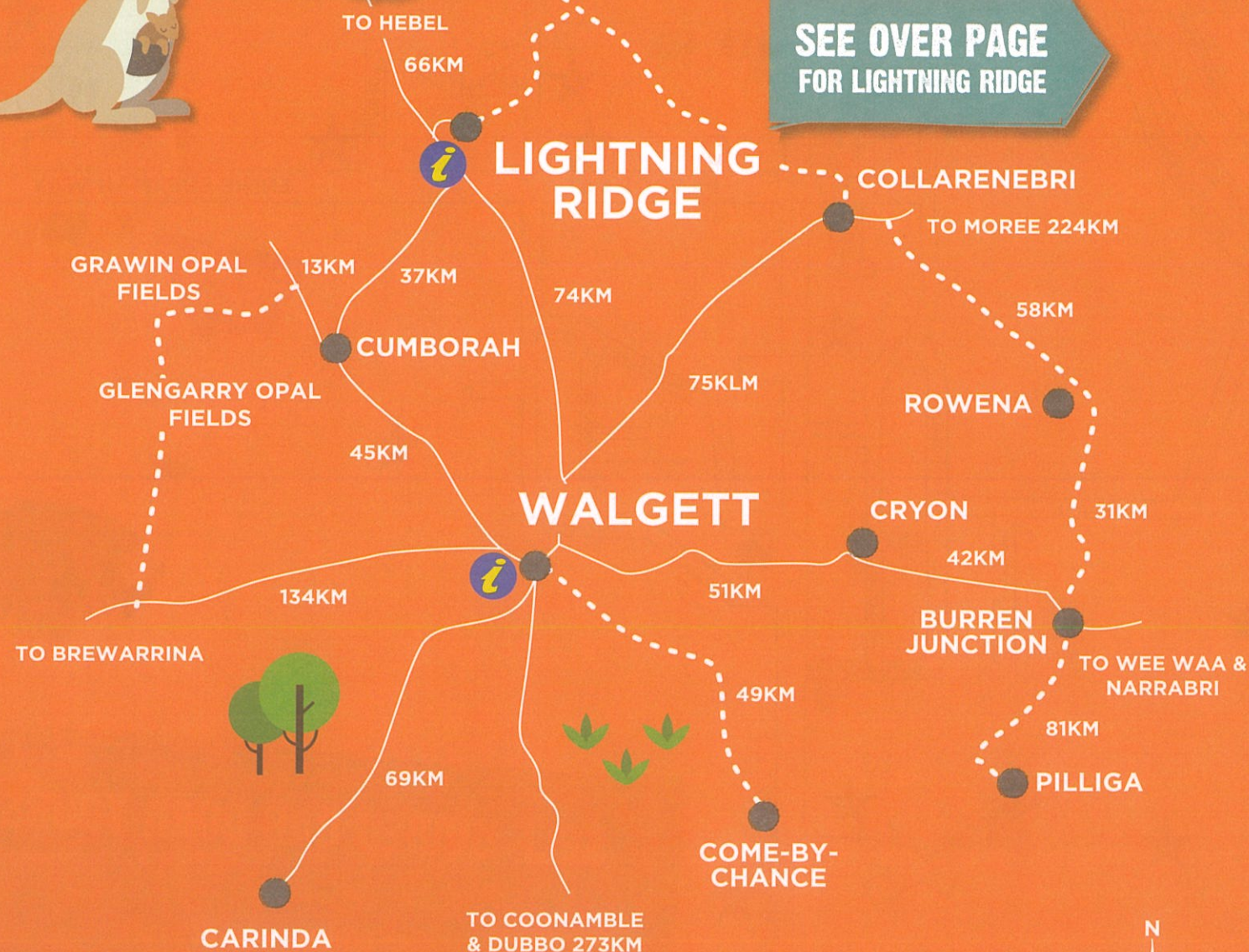


LOCAL EVENTS IN THE AREA

EASTER FESTIVAL
INCLUDING RACE MEETING
LIGHTNING RIDGE OPAL FESTIVAL - JULY
CROWNING OF THE OPAL QUEEN -
OPAL PRINCESS - SEPTEMBER
POTCH QUEEN - OCTOBER

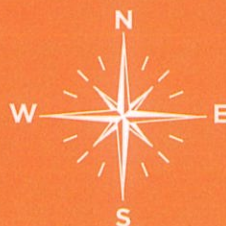
LIGHTNING RIDGE HAS THE
LARGEST KNOWN DEPOSITS OF
BLACK OPALS IN THE WORLD

SEE OVER PAGE
FOR LIGHTNING RIDGE



i INFORMATION CENTRE
- - - - - UNSEALED ROAD
————— SEALED ROAD

DISCOVER MORE ONLINE
WWW.WALGETT.NSW.GOV.AU



FREE LIGHTNING RIDGE ENTRY
HERITAGE COTTAGE
HOSPITAL GALLERY

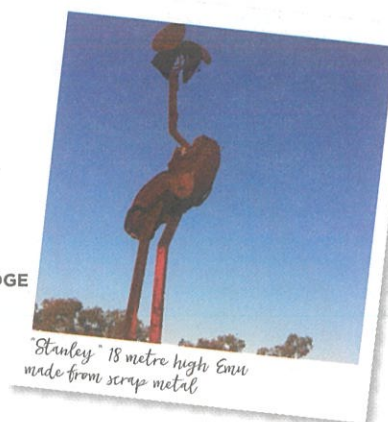
1932 Miners' Cottage and 1915 Cottage Hospital Gallery with historical displays, books, crafts.
See signs for opening times, or open by appointment.

Morilla St, Lightning Ridge, NSW 2834
Telephone 02 6829 0747

GREAT INLAND WAY

CAIRNS
BRISBANE
SYDNEY
MELBOURNE

WALGETT LIGHTNING RIDGE



OPAL MINE ADVENTURE WALK-IN MINE

Open 7 Days...9am-5pm
Self-Guided Underground Tour
Located on the BLUE CAR DOOR TOUR 4
Phone 02 6829 0473

OPAL CARAVAN PARK

OPPOSITE THE ARTESIAN BATHS
Powered & Unpowered Sites, Ensuite Sites, Cabins
Pool, BBQs, 3 Camp Kitchens & Fossicking
142 Pandora Street Lightning Ridge
Phone 02 68294884 Mobile 0438311795
email: enquiries@opalcaravanpark.com.au
www.opalcaravanpark.com.au

JOHN MURRAY ART GALLERY
LIGHTNING RIDGE, NSW AUSTRALIA

8 Opal Street Phone 68291130

Quiet Man's Place
International Awarding Winning Artist
Lot 180 Aerodrome Road
Opening Times Phone 0427 679 227



DOWN TO EARTH OPALS
Opal like you've never seen before... and more

OPEN 9 - 5.30, 7 DAYS at
11 Morilla St, Lightning Ridge
www.downtoearthopals.com.au

LIGHTNING RIDGE Holiday Park

- In the Centre of Town
- Powered & Unpowered Sites
- Ensuite Sites
- Grassed Camping Area
- Pet Friendly
- Laundry & Dump Point
- Free WiFi

44 HARLEQUIN STREET
stay@lightningridgeholidaypark.com.au
(02) 6829 0532
www.lightningridgeholidaypark.com.au

LostSea OPALS

Qualified Designer & Jewellers
Designing and creating fine jewellery to treasure forever...

2 Morilla Street
Ph 02 6829 0066
LostSeaOpals.com.au

OUTBACK OPAL TOURS
See the best there is to see of the "Ridge"

Daily TOWN TOURS
9am & 2pm - 7 days a week

DAY TOURS ALSO AVAILABLE

www.outbackopaltours.com.au
BOOKINGS (02) 6829 4110

VISIT THE BEST
Opp. Post Office
OPAL CAVE

AUSTRALIAN OPAL CENTRE
LIGHTNING RIDGE • NSW

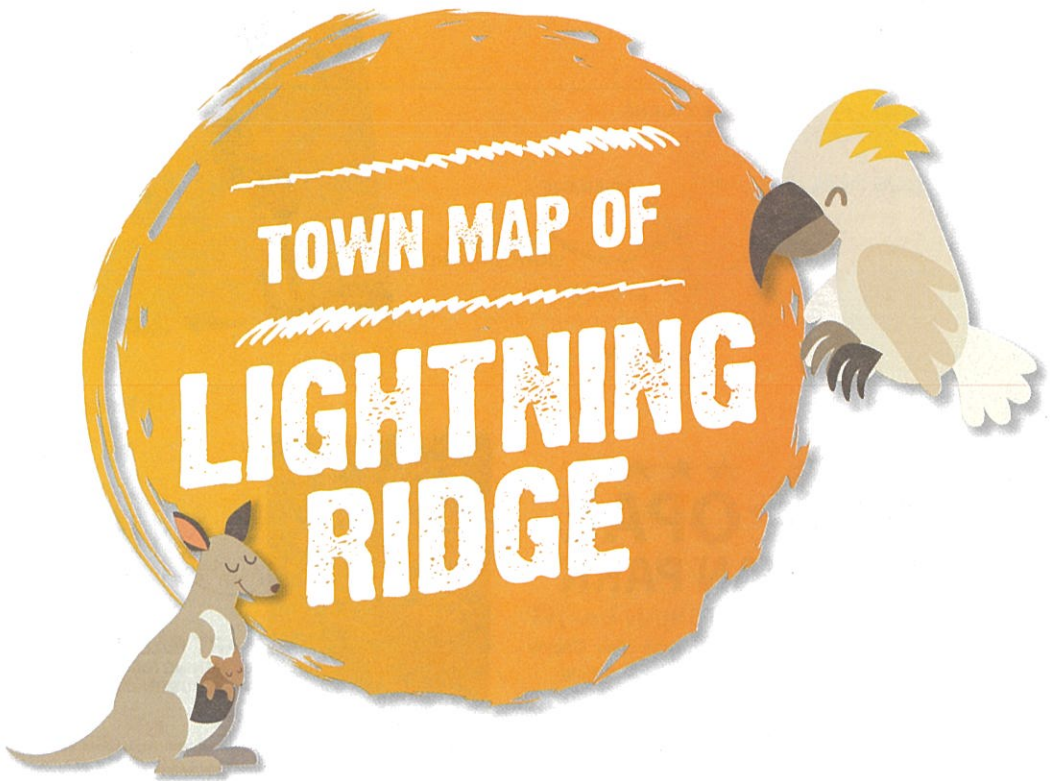
Preview a new world centre for opal science, arts and training • See highlights of the largest ever public collection of opalised fossils
Visionary • Non profit
VISIT, JOIN, SUPPORT!
11 Morilla St, L. Ridge
australianopalcentre.com

CATCH THE OPAL BUGS...with Black Opal Tours
Est. 1972

8:30am
12:30pm
Summer tours: 8:15am

BOOKINGS 6829 0368
7 DAYS

THE GOONDEE
Aboriginal Keeping Place
83 Pandora Street
Phone Cindy 0427646450



★ ATTRACTIONS

1. Historical Society @ Heritage Cottage
2. Australian Opal Centre - Fossils & More
3. John Murray Art Gallery
4. Lightning Ridge Sport & Aquatic Complex
5. The Goondee - Aboriginal Museum
6. Arts & Crafts & Library
7. Bottle House & Collectables
8. Cooper's Cottage
9. Cemetery
10. Bevan's Cactus Gardens
11. Opal Mine Adventure - Walk in Mine
12. Artesian Bore Baths
13. Amigo's Castle
14. Kangaroo Hill Antiques & Collectables
15. A Quiet Man's Place - Art Gallery
16. Church built for "Goddess of 1967" Movie
17. The Big Opal Mine
18. Chambers of the Black Hand - Mine
19. Old Chum's Track - Nature Walk
20. Brian @ Lunatic Hill

🚐 CARAVAN PARKS

1. Outback Resort - Onyx Street, ph 6829 0304
2. Crocodile Caravan Park - Morilla Street, ph 6829 0437
3. Lightning Ridge Holiday Park - Harlequin Street, ph 6829 0532
4. Opal Caravan Park - Pandora Street, ph 6829 4884
5. Lorne Station - Lorne Road, ph 6829 0253

🏠 MOTELS

1. Outback Resort - Onyx Street, ph 6829 0304
2. Fossickers Cottages - 2 Bedroom
3. Fossickers Cottages - 1 Bedroom
4. Fossickers Cottages - 3 Bedroom
Book at Lost Sea Opals, ph 6829 0066
Cnr Morilla & Onyx Streets
5. Coopers Cottage - Morilla Street, ph 6829 0448
6. Wallangulla Motel - Morilla Street, ph 6829 0542
7. Bluey Motel - Morilla Street, ph 6829 0380
8. Black Opal Motel - Opal Street, ph 6829 0518
9. Sonja's Bed & Breakfast - Butterfly Avenue, ph 6829 2010 or 0427 185 724

- Doctor's Surgery
- Post Office
- Police Station
- Hospital
- Chemist

Lightning Ridge Visitor Information Centre
 PO Box 1380 Lions Park Morilla Street
 Lightning Ridge NSW 2834
 Ph: 02 6829 1670
 Email: lrivic@walgett.nsw.gov.au
 Website: www.walgett.nsw.gov.au



SELF-GUIDED CAR DOOR TOURS
 Take our colour coded Car Door Tours & explore Lightning Ridge's surrounding mine fields.

\$1 will buy your INFORMATION SHEET
 which includes map & commentary on the points of interest.
 Can only be purchase from our Information Centre