

# Araluen Cultural Precinct

*The premier location to experience  
Central Australian Art and Culture*

The Araluen Cultural Precinct is home to some of the most significant artistic, cultural and historical experiences in Alice Springs and provides a unique visitor experience, encompassing Central Australia's key cultural institutions and collections.



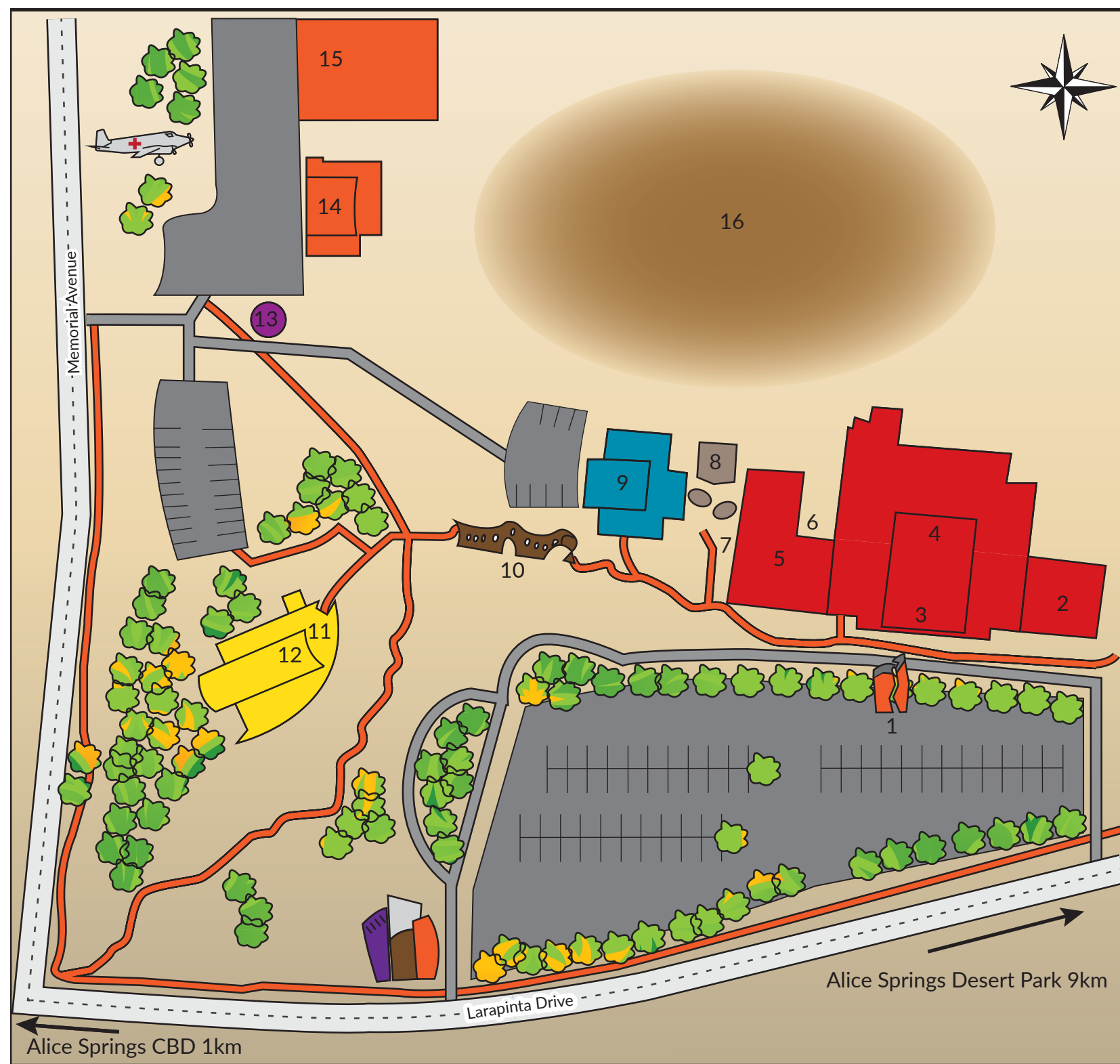
[www.araluenartscentre.nt.gov.au](http://www.araluenartscentre.nt.gov.au)



/araluenartscentre



@araluenartscentre



- |  |               |  |          |
|--|---------------|--|----------|
|  | Major Road    |  | Car Park |
|  | Internal Road |  | Path     |
- 1 Public Art:  
*The Split*, Trevor Weekes
  - 2 Witchetty's Function Space
  - 3 Public Art:  
*Arrernte Country*, Wenten Rubuntja and Cedar Prest, slumped and stained glass.
  - 4 Araluen Arts Centre: Theatre
  - 5 Araluen Arts Centre: Galleries
  - 6 Sculpture Garden
  - 7 Public Art:  
*Yuelumu, Nyinyalingi, Yulutjirrka, Tjipitji and Ngalu* Clifford Possum
  - 8 Yaye's Cafe  
Open Monday-Friday 9am- 4pm  
Saturday & Sunday 8am - 4pm
  - 9 Central Craft
  - 10 Public Art:  
*Yeperenye*, Dan Murphy and students from the Centre for Appropriate Technology's ATWork program
  - 11 Museum of Central Australia
  - 12 Strehlow Research Centre
  - 13 Kookaburra Memorial
  - 14 Central Australian Aviation Museum: Connellan Hangar
  - 15 Central Australian Aviation Museum - Bellman Hangar
  - 16 Big Sister Hill  
(Sacred site - *please do not climb*)



In its four galleries and 500 seat theatre, the **Araluen Arts Centre** presents an annual program of exhibitions, theatre, and film.

The **Araluen Arts Centre** showcases the beginning and continuing development of the contemporary Aboriginal art movement, particularly of Central Australia and the Western Desert.



The **Araluen Art Collection** includes significant original watercolours by Albert Namatjira in his artistic response to the Central Australian landscape.

The **Museum of Central Australia** features exhibits of the unique natural and geological history of the region and incorporates the **Strehlow Research Centre**.



The **Central Australian Aviation Museum** displays a selection of aircraft and an original Connellan Airways hangar.

**Central Craft** includes a gallery, craft shop and workshop studio.

**Yaye's Café** serves coffee, breakfast, lunch and bush-inspired treats and is open from 9am Mon-Fri and from 8am Sat and Sun.



61 Larapinta Drive , Alice Springs  
8951 1120 | [araluen@nt.gov.au](mailto:araluen@nt.gov.au)  
Galleries open 7 days a week 10am - 4pm

