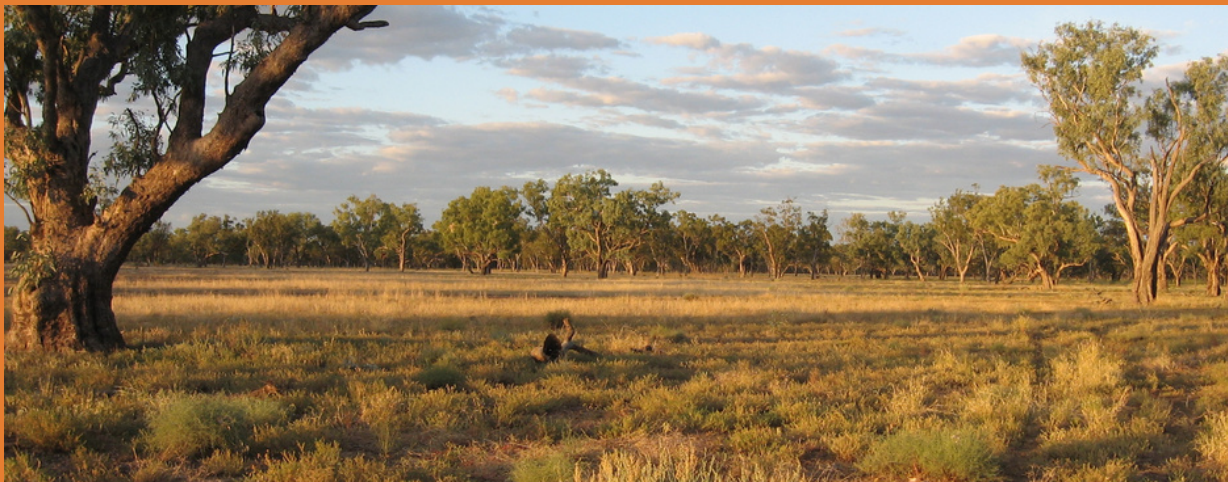




Located 15 km south of Charleville in the semi-arid Mulga Lands, this 2000 hectare Reserve contains most of the major vegetation types of the region.

The Charleville area has been home to the Bidjara people for thousands of generations.

From 1889 until 2003, the Reserve was used for livestock grazing, first by stock awaiting transport by rail and later as a butcher's paddock'. In 2003, it was declared a Reserve for Environmental Purposes in recognition of its diversity and educational potential.



A 30 km self-guiding drive suitable for 4WD vehicles meanders through spinifex heath and mulga forest, skirts the edge of a gidgee swamp, then crosses a sand ridge leading down to the mixed floodplain and poplar box and cypress pine communities fringing the Warrego River.

Learn about the vegetation communities, identify semi-arid plant species, stop for a cuppa or picnic, or spot some of the >100 bird species known from the Reserve.



Allow at least 3-4 hours for your explorations. There is also a short walking circuit through the spinifex, leaving from the welcome sign.



CHARLEVILLE BOTANICAL RESERVE

GPS coordinates for points on map:

- ① -26.532°S, 146.208°E
- ② -26.538°S, 146.203°E
- ③ -26.544°S, 146.134°E
- ④ -26.527°S, 146.118°E
- ⑤ -26.549°S, 146.110°E

Please enjoy your time at the Reserve, and respect this special place by keeping to marked tracks and taking your rubbish home. Mobile reception is patchy, so please keep safe and carry enough water.

