



Uunguu Visitor Pass



Wunambal Gaambera Country

UUNGUU COAST, KIMBERLEY, WESTERN AUSTRALIA

Welcome to Wunambal Gaambera Country

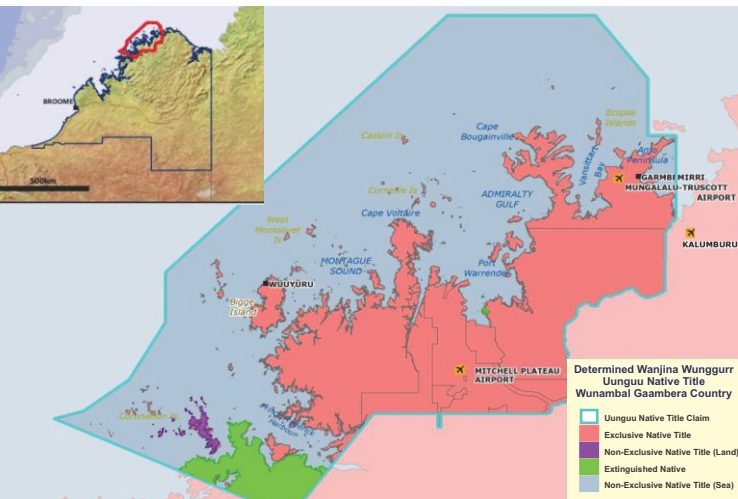
We Wunambal Gaambera people welcome you to our Country, to share with you aspects of our Wanjina Wunggurr culture and the rugged, inspiring beauty of Wunambal Gaambera savanah landscapes and coastal seascapes.

Our Country lies on the northern coast of our Wanjina Wunggurr Community in the far north Kimberley (see map below). Wunambal Gaambera (Uunguu) people, Wororra (Dambimangari) people and Ngarinyin (Willinggin) people share common Wanjina Wunggurr ancestors and whilst together we comprise the Wanjina Wunggurr Community, each group manages its own Country.

Native Title

The Wanjina Wunggurr (Uunguu) native title determinations recognise Wunambal Gaambera People's exclusive rights to 90 percent of our land and islands (see red on the map), and shared native title in the sea.

Wunambal Gaambera people, as native title holders, have collectively authorised 50 Visitor Locations, including our cultural and natural icon, Punamii-Uunpuu (Mitchell Falls), for you to visit (see map overpage). You will need our Uunguu Visitor Pass (UVP) to visit these locations. We Wunambal Gaambera people welcome UVP holders to our Country.



Uunguu Visitor Pass (UVP)

Our UVP provides travellers with Traditional Owner permission to visit approved Visitor Locations on Wunambal Gaambera Country, enjoy an authentic Uunguu Experience and contribute to keeping our Visitor Locations healthy and open for future visitor generations.

We have two Visitor Zones: 1) Uunguu Coast (Wunambal and Gaambera coastlines and islands) and 2) Ngauwudu Road (access via 4WD and Mitchell Plateau Airstrip). Both zones offer high cultural values, solitude and rugged beauty.

UVPs can be purchased online at www.wunambalgaambera.org.au or at all Kimberley visitor centres and Drysdale River Station. If you are travelling with a tour group, your registered Tour Operator will purchase your UVP on your behalf.

Please note: Camping is only permitted at Munurru and Mertens Campgrounds. Our UVP does not include camping or private guided tour fees.

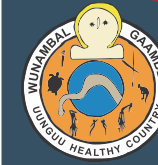
You may need a National Park permit from the Department of Biodiversity, Conservation and Attractions (DBCA) to enter Mitchell River National Park. Your UVP will assist you to obtain an on-line transit permit from the Department of Planning, Lands and Heritage (www.dplh.wa.gov.au) before entry to a Visitor Location on an Aboriginal Reserve. Visit our website to find out which Visitor Locations require a DPLH permit.



Wunambal Gaambera Country is a remote natural environment with unpredictable conditions and you enter at your own risk. Please heed Visitor and Healthy Country Warnings and respect management operations.

Our Healthy Country Vision is to achieve our cultural, environmental and economic security from our Country that we can pass to our future generations, just as our ancestors did for us.

Please help us to keep our Country healthy.



Uunguu Visitor Pass



Wunambal Gaambera Country



Punamii-Uunpuu (Mitchell Falls)



Welcoming you to Wunambal Gaambera Country



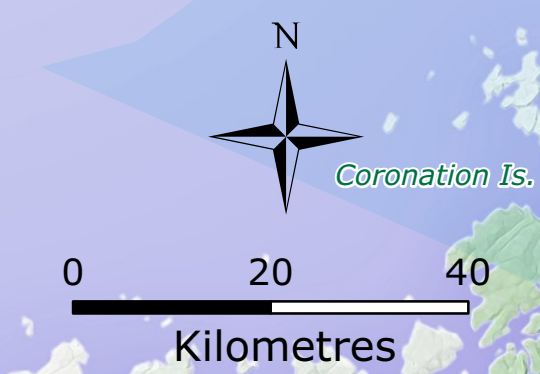
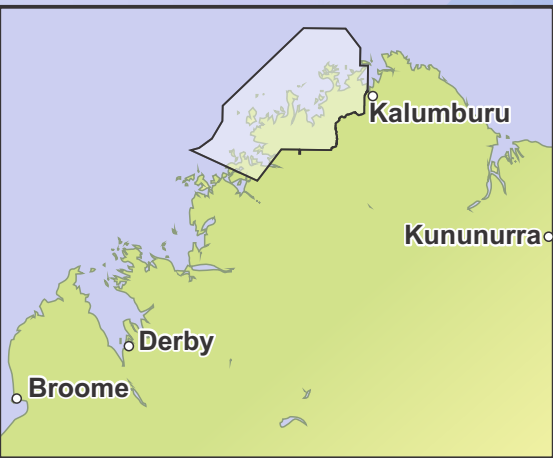


Uunguu Visitor Pass



UVP PASS TYPE – Independent Visitors		YEAR & FEE (Includes GST)	
Children 5 and under do not require a UVP	2019	2020	
Ngauwudu Road Zone 13 Visitor Locations / 5 consecutive days Private 4WD Vehicles via Port Warrender Road & Private and Charter Aircraft via Mitchell Plateau Airstrip Adult (16yrs+)pp	\$45	\$45	
Ngauwudu Family 1 (1 adult & 1 or more children)	\$65	\$65	
Ngauwudu Family 2 (2 adults & 1 or more children)	\$110	\$110	
Bushwalker pp In approved bushwalking corridors / 14 consecutive days (includes access to all Ngauwudu (Road) Zone Visitor Locations)	\$90	\$90	
Onshore Access (Uunguu Coast Zone) pp Private Vessels going ashore to Visitor Locations 50 Visitor Locations / 30 consecutive days	\$90	\$90	
Onshore Access (Uunguu Coast Zone) pp Private Sea Planes & Helicopters going ashore to Visitor Locations 50 Visitor Locations / 10 consecutive days	\$90	\$90	

Wunambal Gaambera Country Visitor Zones & Locations



**Bushwalking Corridors are open
1 July to 31 October.**
(Visit wunambalgaambera.org.au for map)

R46232 – Mitchell River National Park
AR24705 & AR 30643 – Aboriginal Reserves

UVP Visitor Location Categories

- Historical (W*)
- Cultural
- Natural
- Historical (M*)
- Transit Point

* (W)=WW2
*(M)=Maritime or Makassan